

NIPPON FLEXISEAL ELASTOMERIC MEMBRANE

Recommended Uses

Use as undercoat for protection of exterior/interior surfaces such as wall, brickwork & wallboards. It can be used to fill hairline cracks at exterior/interior wall and can also be used as a water proofing for masonry surfaces such as roof, wall, and balcony etc.

Composition

- Pigments** : Mainly Titanium Dioxide and Mineral Extenders.
- Binder** : Styrene Acrylic Polymer Dispersion.
- Thinner** : Water

Properties

- Colour** : White
- Appearance** : Mid Sheen

Product Description

Nippon Flexi-Seal Elastomeric Membrane is a high build elastomeric styrene acrylic based membrane developed for exterior/interior use. It is specially formulated with 2 in 1 sealer & filler property and is highly flexible to cover hairline cracks. Nippon Flexi-Seal Elastomeric Membrane has excellent water resistance with good adhesion that seals the pores of concrete to prevent water penetration to the substrate. It contains non-added Lead and Mercury.



Brush / Roller

Use brush or roller for Application

Recommended no. of coats

1 - 2 coats

Dilution

For the 1st and 2nd coats, dilute with 5% water

(No dilution is required, if there are any hairline cracks, fill up the hairline cracks first before applying a thick film on the substrate)

Use as an undercoat sealer

Drying Time

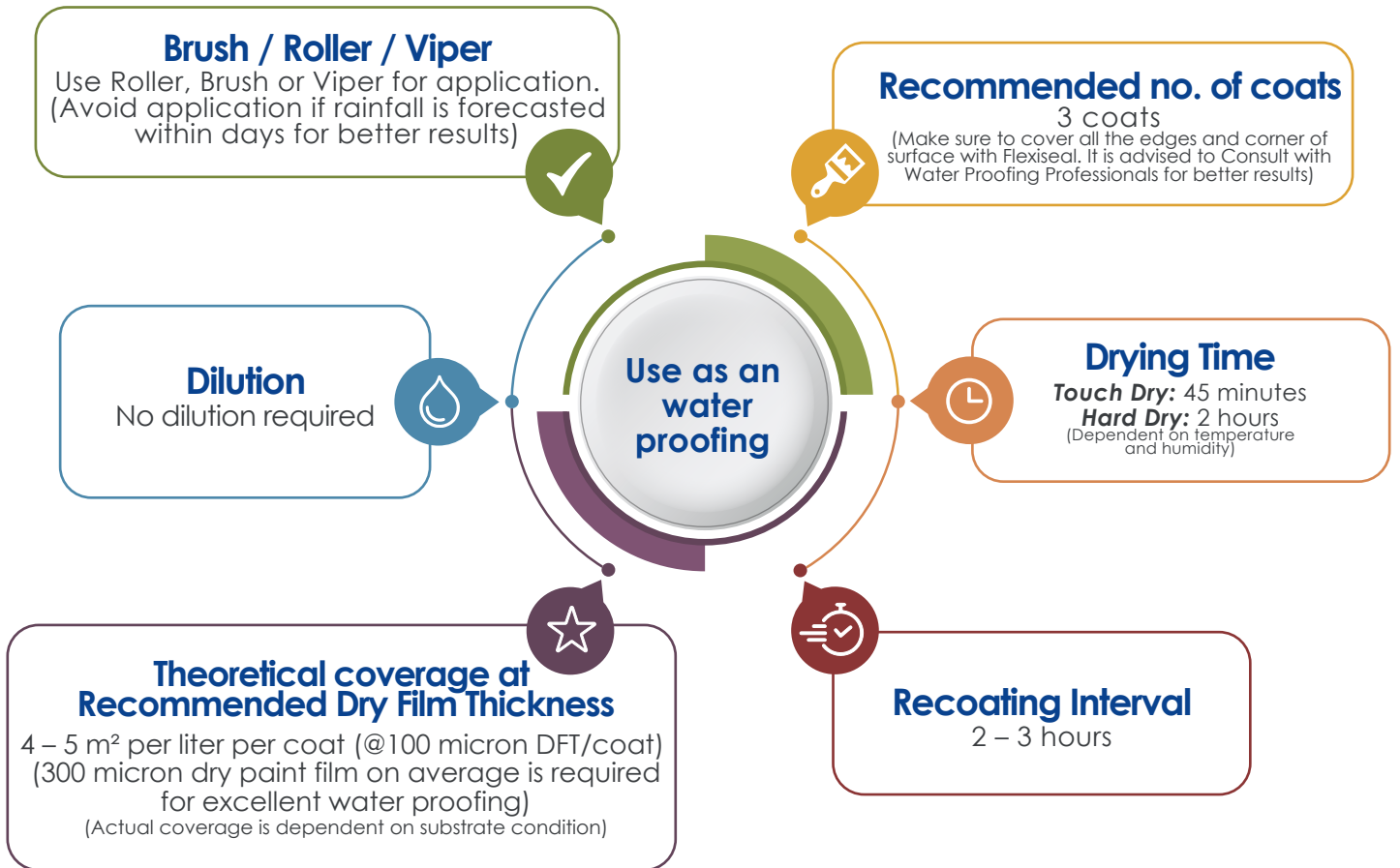
Touch Dry: 45 minutes
Hard Dry: 2 hours
(Dependent on temperature and humidity)

Theoretical coverage at Recommended Dry Film Thickness

8 – 10 m² per liter per coat
(@35 micron DFT/coat)
(Actual coverage is dependent on substrate condition)

Recoating Interval

2 – 3 hours



Clean Up : Clean up equipment with water immediately after use.

Surface Preparation

Surface should be free from dirt, grease, cement laitance and all other deleterious material which will affect the adhesion of coating with the substrate, it must be cleaned thoroughly and dry completely prior to painting. Surface grinding is recommended to improve adhesion depends on substrate condition. (Recommended painting specification requires the moisture content below 16% measured by Protimeter and alkalinity to be below pH9).

Previously Painted Surfaces

Remove all unstable paint film, loose chalk, dust and foreign matter. Make good any surface defects, clean off and dry. Do not paint on chalky surface or powdery surface.



Recommended Paint System

Type of Substrate:
FOR MASONRY

| Sequence | Product Name | No. of Coats |
|-----------------|----------------------------------------------------------------------------|--------------|
| | As an Undercoat | |
| Filler | Nippon Flexi-Seal Elastomeric Membrane | 1-2 |
| Sealer | NP Vinilex 5100 / 5200 or NP Hi-bond Wall Sealer | 1 |
| Finish | Exterior Grade Emulsion | 3-4 |
| | As a water Proofing | |
| Sealer / Primer | NP Vinilex 5100 / Flexiseal Elastomeric Membrane 1 : 1 ratio with water | 1 |
| Finish | Nippon Flexiseal Elastomeric Membrane | 3 |

Standard Packing : 3.64 L

Safety, Health and Environmental Information

Keep container tightly closed and keep out of reach of children or away from food and drinks. Ensure good ventilation during application and drying. When applying paint, it is advisable to wear eye protection. In case of contact with eye, rinse with plenty of water immediately and seek medical advice. Remove splashes from skin by using soap or water. Paint must always be stored in a cool place. When transporting paint, care must be taken. Always keep container in a secure upright position. Dispose off any paint waste in accordance with appropriate Environmental Quality Regulations.