



NIPPON EXTREME WALL PUTTY

Water Based

Recommended Uses

Nippon Extreme Wall Putty is recommended to use on interior masonry walls and ceiling.

Composition

Pigments : Mineral Extender.

Binder : PVA Emulsion

Thinner : Water

Application Methods:

Trowel or Putty : Spread putty to get a smooth finish.

Applicator : Remove any dried putty from the applicator to achieve best performance.

Product Description

Nippon Extreme Wall Putty is a superior quality water based filler for patching cracks, levelling uneven rough porous cement walls, plaster work and filling defective surfaces. It provides a super smooth finish and strong adhesion. It has excellent durability, drying and sanding properties which enhances the performance of top coat.



Clean Up: Clean up all the equipment with water immediately after use.

Previously Painted Surfaces

Remove all unstable paint film, loose chalk, dust and foreign matter using suitable sanding paper or a stiff brush. Dust off properly. Apply NIPPON VINILEX 5100 WALL SEALER and allow thorough drying and then apply Nippon Extreme Wall Putty.

Recommended Paint System

Type of Substrate:

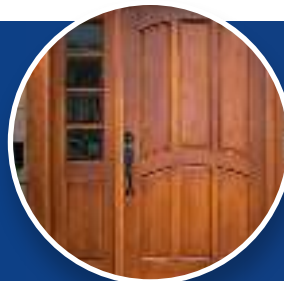
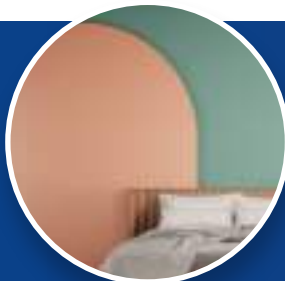
FOR BARE MASONRY, PREVIOUSLY PAINTED SOUND OR POWDERY MASONRY

Sequence	Product Name	No. of Coats	Remarks
Sealer Putty	NIPPON VINILEX 5100 WALL SEALER NIPPON ACS PUTTY	1 2-3	

Safety, Health and Environmental Information:

Keep paint out of the reach of children and away from food and drinks. It is Harmful if swallowed. In case If swallowed seek medical advice immediately. Ensure good ventilation during application and drying. Do not breathe in vapor or sanding dust. Avoid contact with eyes and skin. When applying putty it is advisable to wear eye protection. In case of contact with eyes rinse immediately with plenty of water and seek medical advice. Wear protective clothing and mask during application. Use soap and water to clean the splashes from skin. Putty must always be stored in a cool and dry place. Care must be taken during transportation. Always keep container in a secure upright position. Use sand to contain any spillage. Dispose of putty in accordance with the appropriate Environmental Quality Regulations. Do not discharge into drains or environment. Chemical Safety Data Sheet available on request.

It does not contain any added Lead, Mercury, Cadmium or Chromium compounds.



Standard Packing: 5 Kg, 20 Kg

Note:

The above information is given to the best of our knowledge based on laboratory tests and practical experience. However, since we cannot anticipate or control many conditions under which our products may be used, we can only guarantee the quality of the product.

We reserve the right to alter the given data without prior notice.