



NIPPON HI-BOND ACRYLIC PUTTY

Water Based

Recommended Uses

Nippon HI-Bond Acrylic Putty is recommended to use on interior masonry walls and ceiling

Composition

Pigments : Mineral Extender.
Binder : Acrylic Emulsion
Thinner : Water

Application Methods:

Trowel or Putty : Spread putty to get a smooth finish.
Applicator : Remove any dried putty from the applicator to achieve best performance.

Product Description

Nippon HI-Bond Acrylic Putty is premium quality acrylic based putty with excellent smooth finish, which serves as filler/leveler in a paint system, which not only imparts the finish, but also helps in high coverage of the paint. It is specially formulated for filling cracks, levelling rough porous cement walls, plaster work and filling defective surfaces. Its water-resistance, strong adhesion, drying and sanding properties make the surface long lasting.



Clean Up: Clean up all the equipment with water immediately after use.

Surface Preparation

All the surfaces must be thoroughly dry before putty application. Remove dust, grease, oil and other foreign matters from new masonry surface. Use a bleach solution to treat the surface affected by fungus or algae. Make the surface smooth before application of Nippon HI-Bond Acrylic Putty using sandstone or a coarse sanding paper. Dust off properly. Allow all surfaces to dry completely prior to painting. Avoid painting when the moisture content and alkalinity of the walls is still high. (Recommended painting specification requires the moisture content of the walls to be below 16% measured by protimeter and alkalinity of the walls to be below pH9.)

Previously Painted Surfaces

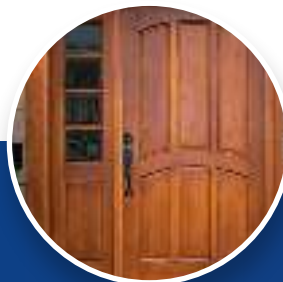
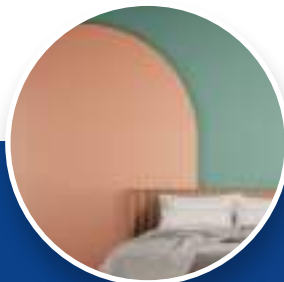
Remove all unstable paint film, loose chalk, dust and foreign matter using suitable sanding paper or a stiff brush. Dust off properly. Apply NIPPON VINILEX 5100 WALL SEALER and allow thorough drying.

Recommended Paint System

Type of Substrate:

FOR BARE MASONRY, PREVIOUSLY PAINTED SOUND OR POWDERY MASONRY

Sequence	Product Name	No. of Coats	Remarks
Sealer Putty	NIPPON VINILEX 5100 WALL SEALER NIPPON HI-BOND ACRYLIC PUTTY	1 2-3	



Standard Packing: 5 Kg, 20 Kg

Safety, Health and Environmental Information:

Keep the paint out of the reach of children and away from food and drinks. It is harmful if swallowed. In case If swallowed seek medical advice immediately. Ensure good ventilation during application and drying. Do not breathe in vapor or sanding dust. Avoid contact with eyes and skin. When applying putty it is advisable to wear eye protection. In case of contact with eyes rinse immediately with plenty of water and seek medical advice. Wear protective clothing and mask during application. Use soap and water to clean the splashes from skin. Putty must always be stored in a cool and dry place. Care must be taken during transportation. Always keep container in a secure upright position. Use sand to contain any spillage. Dispose of putty in accordance with the appropriate Environmental Quality Regulations. Do not discharge into drains or environment. Chemical Safety Data Sheet available on request.

Does not contain any added Lead, Mercury, Cadmium or Chromium compounds.

Note:

The above information is given to the best of our knowledge based on laboratory tests and practical experience. However, since we cannot anticipate or control many conditions under which our products may be used, we can only guarantee the quality of the product.

We reserve the right to alter the given data without prior notice.