



NIPPON VINILEX 5100 WALL SEALER

Interior and Exterior Wall Sealer

Recommended Uses

For protection of interior and exterior walls, ceilings, plaster, brickwork, wall boards against alkali and moisture.

Composition

- Pigments** : Mainly Titanium Dioxide, Mineral Extenders
- Binder** : Styrene Acrylic Emulsion
- Thinner** : Clean Water

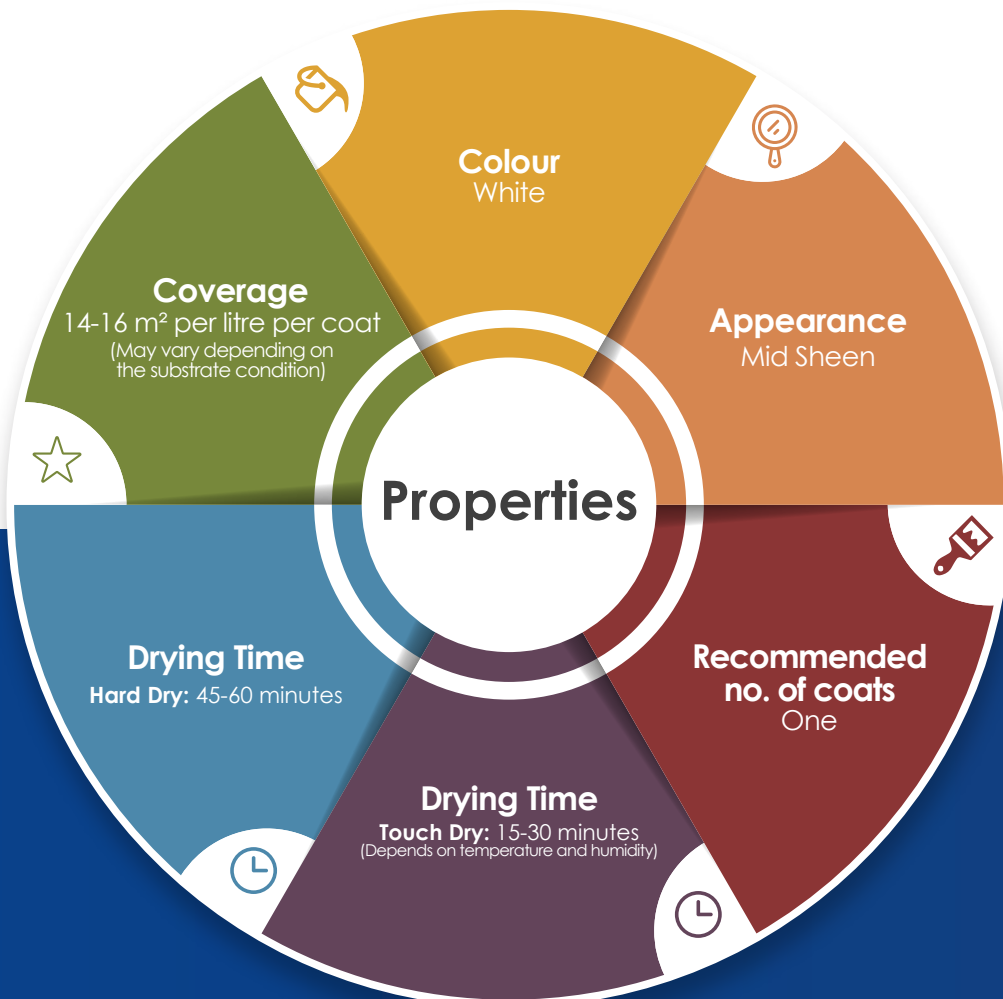
Application Methods:

Thinning by volume

- 1) **Brush** : 50-60% with water
- 2) **Roller** : 20-25% with water
- 3) **Conventional Air Spray** : 25-30% with water

Product Description

Nippon Vinilex 5100 Wall Sealer is a water based sealer recommended to use on interior and exterior plastered walls, ceilings, plaster, brickwork and wall boards. Based on specially formulated acrylic it is designed to enhance protection against alkali, fungus and moisture resulting better performance of topcoat. It binds any powdery residue effectively to the surface providing a uniform substrate for painting



Clean Up: Clean up all the equipment with water immediately after use.

Surface Preparation

Bare Masonry:

Allow all surfaces to dry completely prior to painting. Remove dirt, dust, grease, and any other contaminants. Smoothen the surface using suitable sand paper or sandstone. Dust off thoroughly. Avoid painting when the moisture content and alkalinity of the walls is still high. (Recommended painting specification requires the moisture content of the walls to be below 16% measured by protimeter and alkalinity of the walls to be below pH9.)

Previously Painted Surfaces

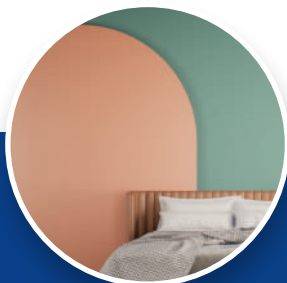
Remove unstable paint film, loose chalk by rubbing down using abrasive paper or wire brush and dust off thoroughly. Use Nippon ACS putty to repair cracks if necessary. Masonry work is recommended to fill large cracks and holes. Allow to dry completely before applying Nippon Vinilex 5100 Wall Sealer.

Recommended Paint System

Type of Substrate:

MASONRY SURFACES

Sequence	Product Name	No. of Coats	Remarks
Sealer	NIPON VINILEX 5100 WALL SEALER	1	
Putty	NIPPON ACS PUTTY	2-3	
Finish	NIPPON WEATHERBOND/ NIPPON PERFECT EMULSION/ NIPPON SUPER MATEX	3-4	
	NIPPON BRILLIANCE MATT ENAMEL	2-3	



Standard Packing: 1L, 4L, 20L

Safety, Health and Environmental Information

Keep paint out of the reach of children and away from food and drinks. It is Harmful if swallowed. In case If swallowed seek medical advice immediately. Ensure good ventilation during application and drying. Do not breathe in vapor or sanding dust. Avoid contact with eyes and skin. When applying putty it is advisable to wear eye protection. In case of contact with eyes rinse immediately with plenty of water and seek medical advice. Wear protective clothing and mask during application. Use soap and water to clean the splashes from skin. Putty must always be stored in a cool and dry place. Care must be taken during transportation. Always keep container in a secure upright position. Use sand to contain any spillage. Dispose of putty in accordance with the appropriate Environmental Quality Regulations. Do not discharge into drains or environment. Chemical Safety Data Sheet available on request.

It does not contain any added Lead, Mercury, Cadmium or Chromium compounds.

Note

*Theoretical Coverage is based on a mathematical formula

$$\left[\frac{\text{Volume Solid \%} \times 10}{\text{Dry Film Thickness}} \right] = \mathbf{m^2 / lit / coat}$$

and does not consider LOSS FACTORS.

Variables like porosity of substrate, application method, dilution ratio, dry film thickness, opacity and so on will affect the loss factor and can vary from 30% - 50% or even more. The above information is given to the best of our knowledge based on laboratory tests and practical experience.

However, since we cannot anticipate or control the many conditions under which our products may be used, we can only guarantee the quality of the product itself. We reserve the right to alter the given data without prior notice.