



T R E N D

B E Y O N D

C O L O U R S

2 0 1 8 / 1 9



Mr Wee Siew Kim
Group Chief Executive Officer
NIPSEA Group of Companies

FOREWORD

Essentially, identifying emerging trend colours is key in capturing the rising opportunities in the marketplace and most importantly, in driving colour innovation. In creating market-leading trend colours that will and can redefine consumer's discernment, it is important to understand the various influences that drive consumer preference, especially in Asia.

As Asia's leading total coatings solution provider, Nippon Paint has taken on the leadership role in developing the Trending Asian Colour Palettes – a truly Asian Colour Palettes made by Asian Professionals.

In developing this series of mesmerising Asian colour palettes, Nippon Paint has strategically gathered renowned designers from across 11 countries in the Asian region to forecast emerging colours and trends in the industry. Through engaging and

assimilated colour forecasting workshops participated in by industry professionals such as architects, interior designers and design professionals, we were able to gather invaluable insights in exploring the possible impacts we could make through these trending colours.

Leveraging on our positioning as the Total Coatings Expert, Nippon Paint continues to stay committed in pushing the boundaries and driving efforts on the colour innovation front – as we now present to you our next installation of the **Trend Beyond Colours 2018/19**.

There are four inspiring key themes in the **Trend Beyond Colours 2018/19** - *"Transient Glow"*, *"Conscious Being"*, *"Essential Balance"* and *"Seeking Adventure"*. Each theme embodies eight distinctive colours which come in the form

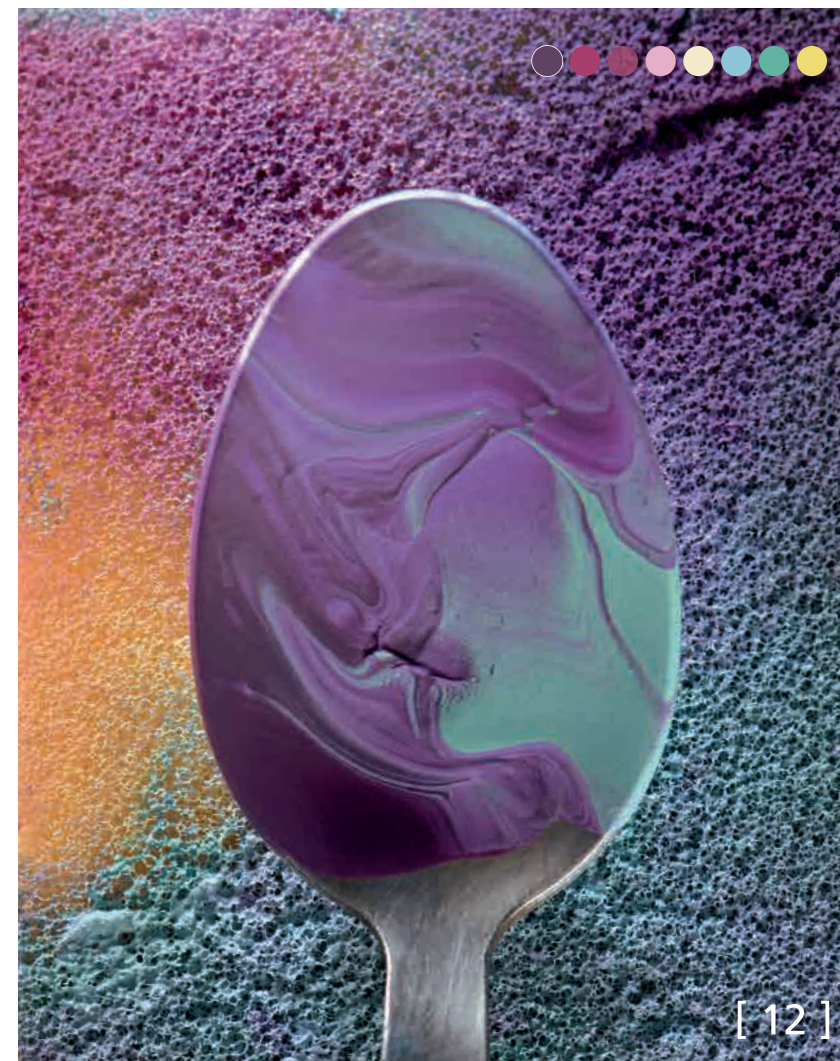
of unique decorative coatings, with the ability to elevate the essence of Asia and influence the lives of its people. Apart from the decorative range, we are also unfolding a trend among Asians which is our maiden metallic range of colours to bring a differentiated approach and aesthetic value - to meet the needs of today's discerning consumers.

We are hopeful that the **Trend Beyond Colours 2018/19** shall and will become an integrated part of our consumers' lives today and tomorrow - inspiring them to re-think coatings and re-create possibilities on all surfaces. We believe that this book will serve as an inspiration to further unlock creative expressions across multi-cultural, multi-platforms and multi-industries, as we recognise the growing value of Asian consumers and the importance of staying ahead of future changes.



CONTENTS

- [04] PUBLISHER'S LETTER
- [06] OUR EVENT
- [08] TREND INFLUENCES
- [12] TREND 01 – TRANSIENT GLOW
- [28] TREND 02 – CONSCIOUS BEING
- [44] TREND 03 – ESSENTIAL BALANCE
- [60] TREND 04 – SEEKING ADVENTURE
- [76] COLOUR FLOW
- [78] COLOUR EVOLUTION
- [80] CREDITS
- [82] MOMENTO SPECIAL EFFECT PAINT



PUBLISHER'S LETTER

As colour trend forecasters, Colour Hive is often called upon to chart colour nuances around the world. We recognise and admire the uniquely rich and vibrant colour palettes of Asia; this dynamic region is increasingly setting the pace when it comes to forward-thinking colour innovation. This is why we were delighted to be involved in this project. Moreover, it was fascinating to see how our own independent findings dovetailed so perfectly with the comprehensive knowledge and insight shared with Nippon Paint's ambitious and comprehensive colour workshop.

We live in a time of unprecedented change, and believe that it is vital to embrace the opportunities of globalism and the inevitable impact that connectivity has on how we view colour. However, we also believe that there is a growing interest in celebrating and embracing regionalism; giving people colours that feel uniquely tailored to the lives that they lead rather than adopting a 'one size fits all' approach.

The four trends developed in this book reflect an in-depth analysis of future directions on multiple levels, both from a global perspective but also, and most importantly, encapsulating the spirit, energy and creativity of Asia.





OUR EVENT

Our colour forecasting process for 2018/19 began in March 2016, at NIPPON PAINT's colour workshop held in Bangkok where 65 of Asia's foremost design and colour enthusiasts from 11 different countries were invited to share their thoughts, knowledge and forecast on colour. Working in groups and focusing on important factors such as economy, society, technology and business, we were able to distill the gathered information and create a unique Asian trend palette for 2018 and beyond.

To develop these initial concepts into working colour palettes, we enlisted the services of global trend and colour authority Colour Hive. With their experience in working with trend panels across the world and their specific understanding of the Asian market, they were readily attuned to our perspective, and were able to develop upon our colours from within their own forecasts.



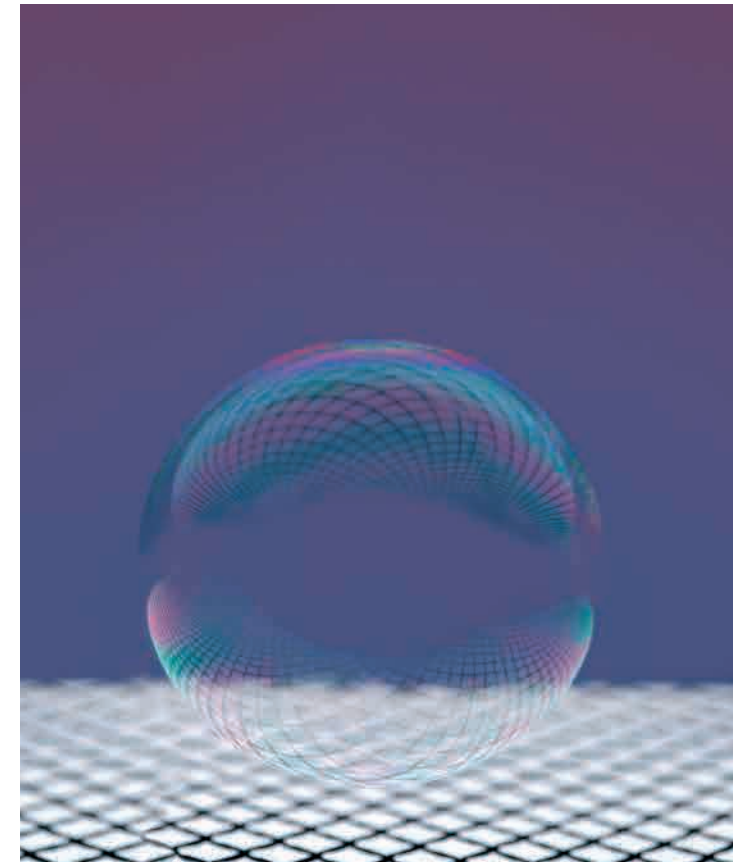
TREND INFLUENCES

Each season we work with a panel of Asian professionals to identify and decipher the socio-economic, lifestyle and technological trends that will shape the outlook for surfaces and colours.

For this season, there are six powerful influences that form the basis of the trend stories you will see in this Trend Beyond Colours 2018/19.

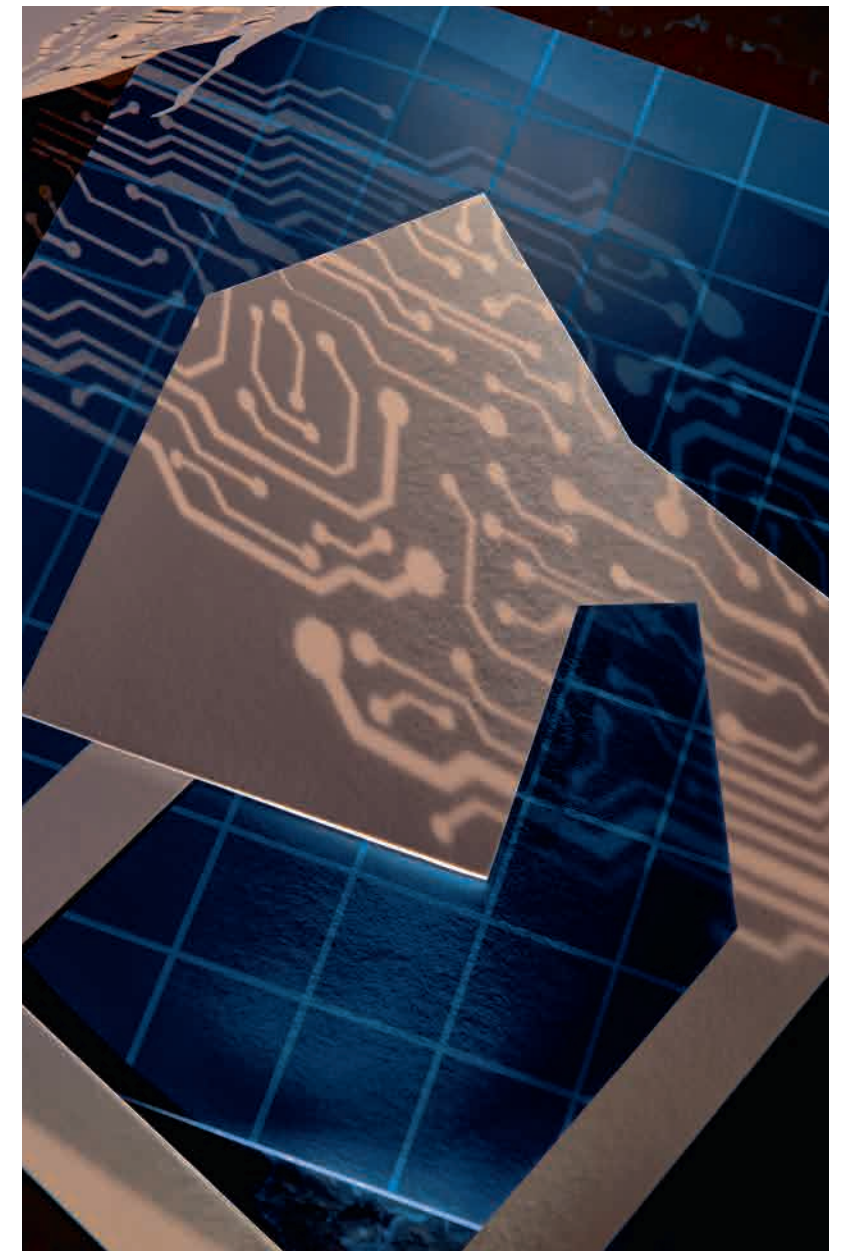
HUMANISED TECH

Our increasing dependence upon technology brings us to a new era in the relationship between man and machine. Tech is no longer merely a tool, it has become an ally and friend, it anticipates our needs and demonstrates human qualities of empathy, recognition and therapy. The possibilities in this vision influence our trend **Conscious Being**.



CHANGING SPACES

In this ever-evolving world the ideals of permanent structures are challenged, spaces become more fluid and architectural design becomes more transparent. As our future needs are unknown we design with flexibility in mind, inspired by the properties of water and glass. This inspiration drives the concept of our trend **Transient Glow**.



LIFE ON THE EDGE

As advances in technology allow us to live and work almost anywhere we are inspired to leave the comfort and safety of our homes in search of undiscovered places and new experiences. The fragility of the planet adds a sense of urgency to our travels. These feelings are expressed in the trend **Seeking Adventure**.



TIME ALONE

An increased longing for physical and spiritual calm is a direct consequence of our busy modern world. In a tranquil environment we are able to meditate, reflect and become attuned to the smallest of sensory stimulants. The feelings elicited here are explored fully in our trend **Essential Balance**.



WATER WORLD

Our global resources are under unprecedented stress and as such, water and the oceans are regarded as vulnerable and precious. Designers are inspired by the unique properties of water and as individuals, an appreciation of the sea is realised in a growing trend for ocean diving holidays. We explore this through **Transient Glow** and **Seeking Adventure**.

FULL IMMERSION

As our environments become increasingly complex, designers are inspired to find more sophisticated ways to catch our attention. The impact of what we see is amplified with the introduction of sounds, smells and textures for a wholly sensorial experience. We reflect this important design development in different ways across all of our trends this season.

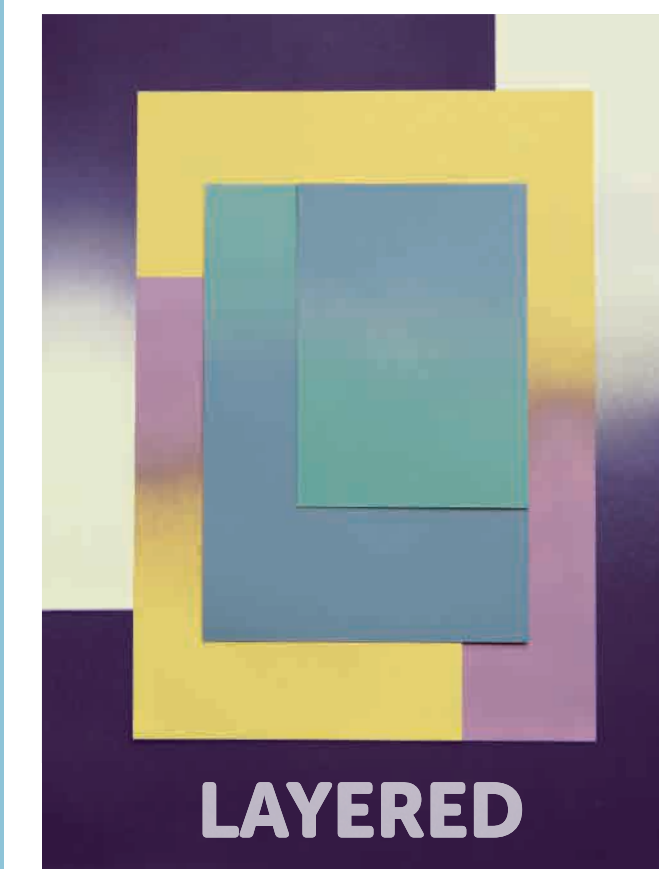




01 TRANSIENT GLOW

DREAMLIKE
SURREAL
ELEGANT
SPIRITED
HARMONIOUS

Transient Glow takes us on an ethereal journey through a dreamlike palette. A resurgence in appreciation of the surrealist art movement hints at our attraction to the poetic and intriguing. The layers of transparency and light refraction create an optimistic and positive atmosphere with special resonance in the Asian market where an affinity with this style of design reflects an outward-looking culture.





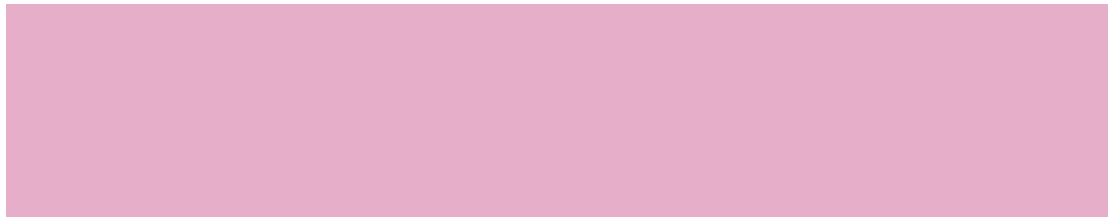
Grape Freeze
NP AC 2089 A



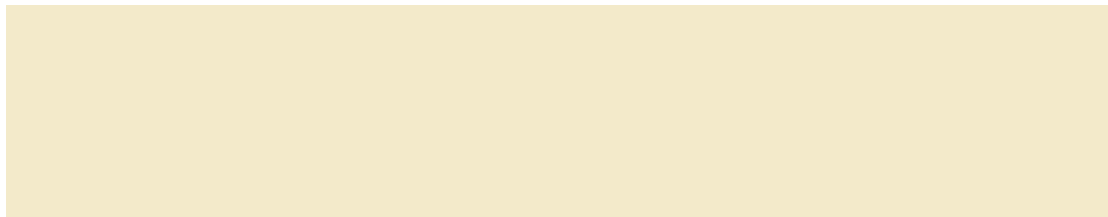
Latin Dance
NP R 1309 A



Metallic Peony Pink
MET 004



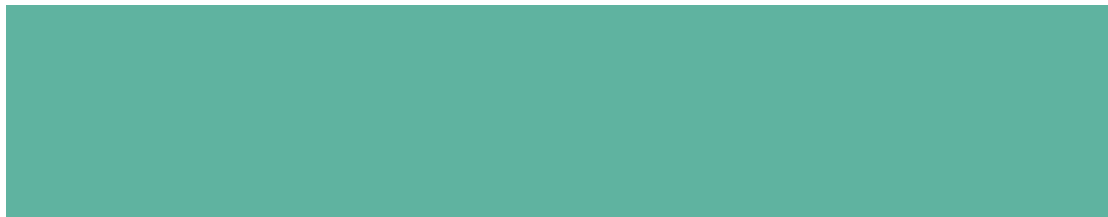
Pink Balloon
NP R 1326 P



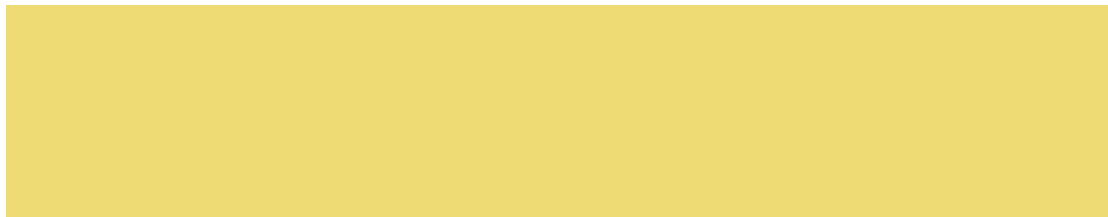
Gossamer White
NP OW 1015 P



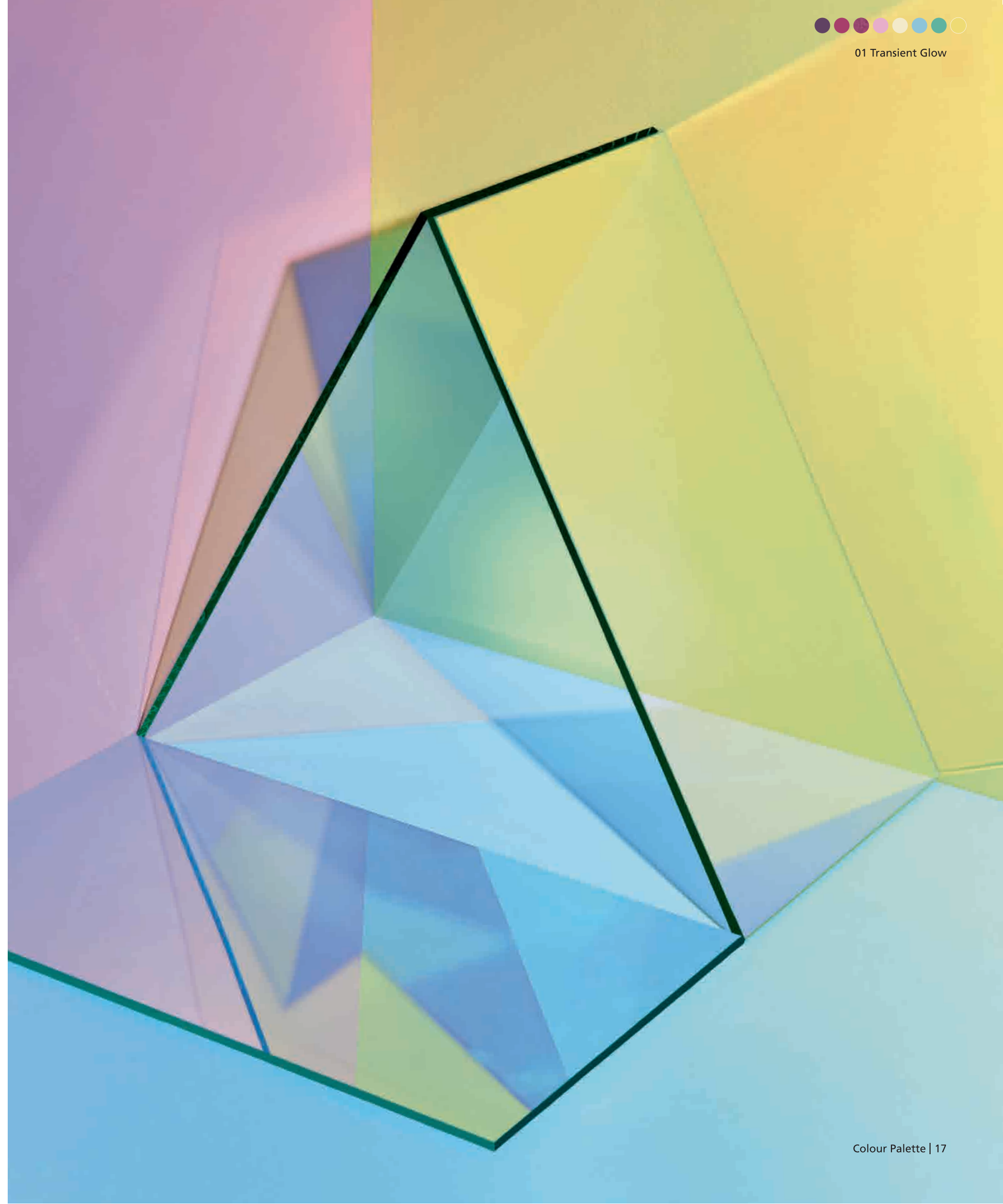
Winning Streak
NP BGG 1566 P



Aqua Glass
NP BGG 1612 T

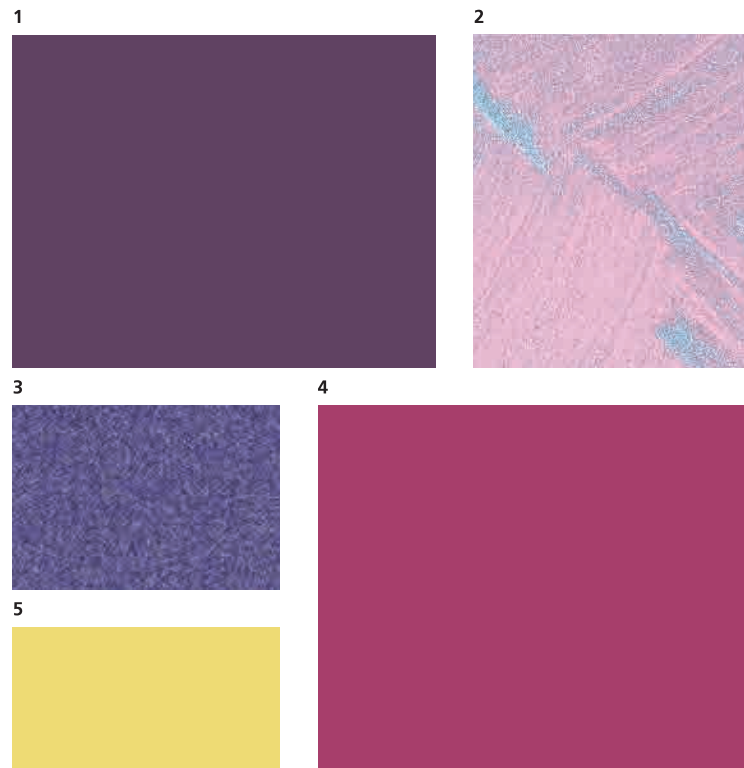


Yellow Pendant
NP YO 1105 T



In Transient Glow ethereal elements are balanced with a sharp intrigue. Delicate ozonic hues seek to capture the fleeting moment, while intense and dynamic tones uplift and excite. In the spirit of weightlessness, a sense of refracted light is played out in shimmering and pearlescent finishes.

DREAMLIKE



- 1 Grape Freeze NP AC 2089 A
- 2 Momento Enhancer Series Cloud Pearl
- Base: Warley Rose 874 Glaze: Clear Skies CP 179
- 3 Metallic Bloom Glitter MET 006
- 4 Latin Dance NP R 1309 A
- 5 Yellow Pendant NP YO 1105 T

A duo of dynamic purples is enhanced with a haze of Cloud Pearl², the layered effect of these shimmering tones on ceilings or a feature wall creates a dreamlike space. Brighten smaller rooms, hallways and stairways with a key accent of Yellow Pendant⁵.

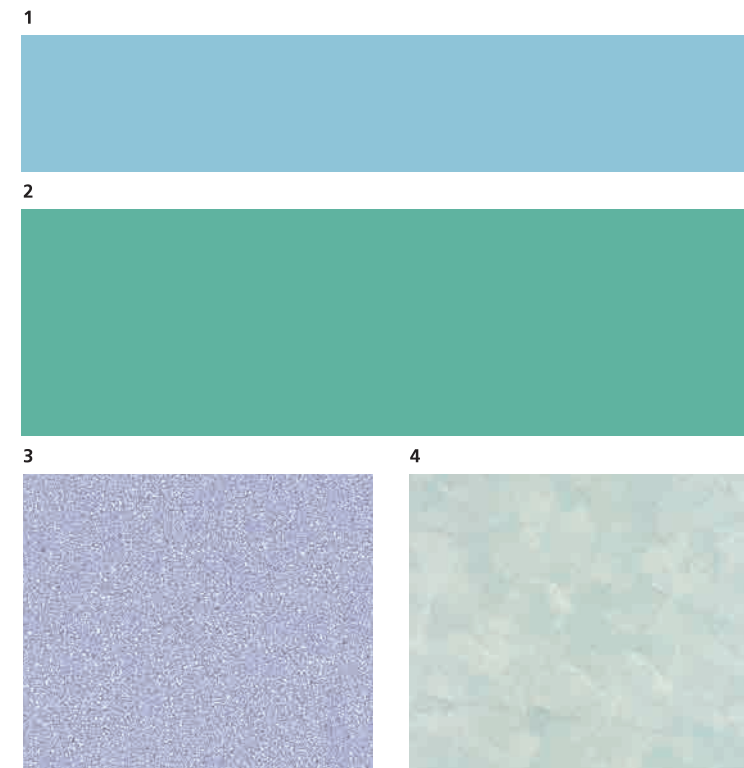
Architecture is given a weightless feel in this harmonious exterior combination. In a gradient effect the semi-opaque finish of Trendy Purple³ brings an intriguing aspect to woods as Gossamer White¹ and Pink Balloon⁴ enhance the ethereal mood. A cooling breeze of Optical Seismic Sea⁵ adds a sophisticated dimension to the pastel base.

ETHEREAL



- 1 Gossamer White NP OW 1015 P
- 2 Metallic Peony Pink MET 004
- 3 Wood Varnish: Trendy Purple T164
- 4 Pink Balloon NP R 1326 P
- 5 Momento Designers Series
- Optical Seismic Sea OP297

IMMERSIVE

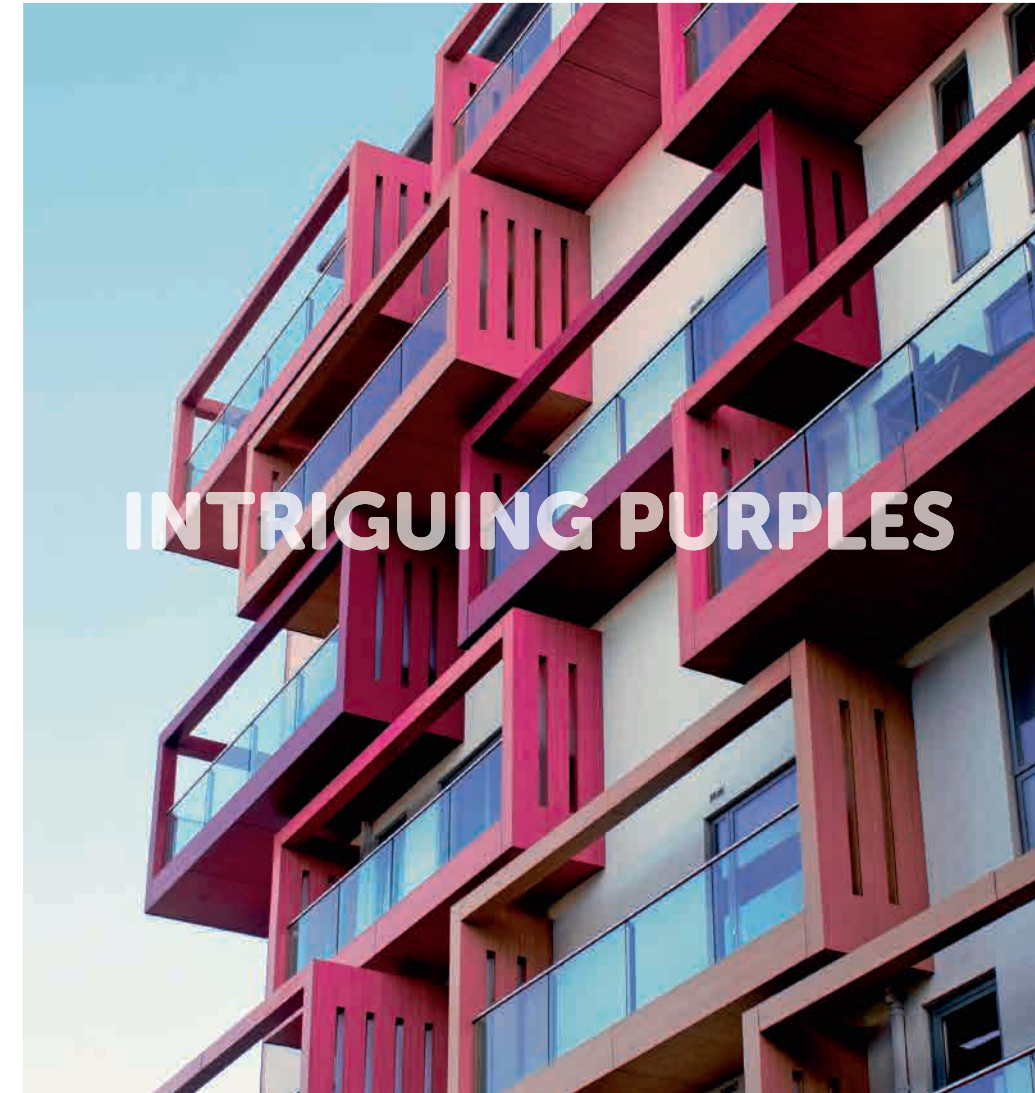


- 1 Winning Streak NP BGG 1566 P
- 2 Aqua Glass NP BGG 1612 T
- 3 Momento Designers Series Velvet Pearl
- Base: Royal Mist NP PB 1474 P (7195 P) Finish: Silver Drama VP 236
- 4 Momento Textured Series
- Sparkle Silver Castle MS 140

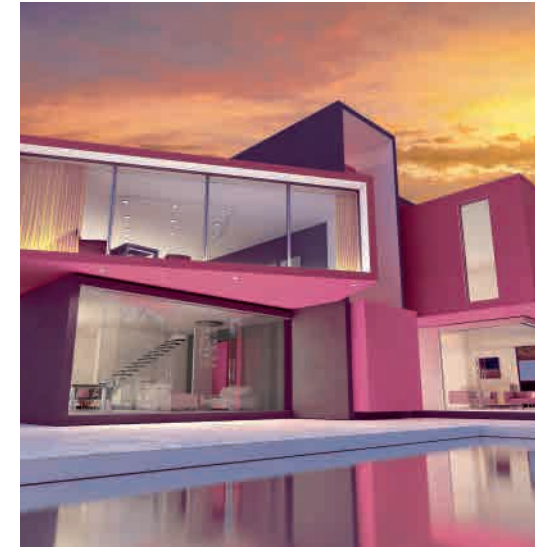
Create an immersive environment with textures. A combination of Royal Mist, Silver Drama and Velvet Pearl³ with its subtle purple undertones, is a multi layered surrealist intrigue. Highlight with a finishing haze of Sparkle Silver⁴. This versatile palette is equally effective for interior and exterior use.

Combine natural materials and uplifting pastels in open spaces

ENGAGING PASTELS



INTRIGUING PURPLES



The intriguing elements of Transient Glow are a perfect palette for dynamic and creative design. Vivid interactions of purple create excitement in exteriors, architecture and public spaces.



Opposite

- 1 Yellow Pendant NP YO 1105 T
- 2 Pink Balloon NP R 1326 P
- 3 Gossamer White NP OW 1015 P
- 4 Aqua Glass NP BGG 1612 T

1



3



2



4



Above left

- 1 Winning Streak NP BGG 1566 P
- 2 Gossamer White NP OW 1015 P
- 3 Latin Dance NP R 1309 A
- 4 Grape Freeze NP AC 2089 A

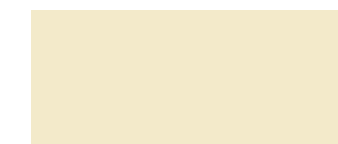
1



3



2



4



Above right

- 1 Yellow Pendant NP YO 1105 T
- 2 Grape Freeze NP AC 2089 A
- 3 Latin Dance NP R 1309 A

1



2



3



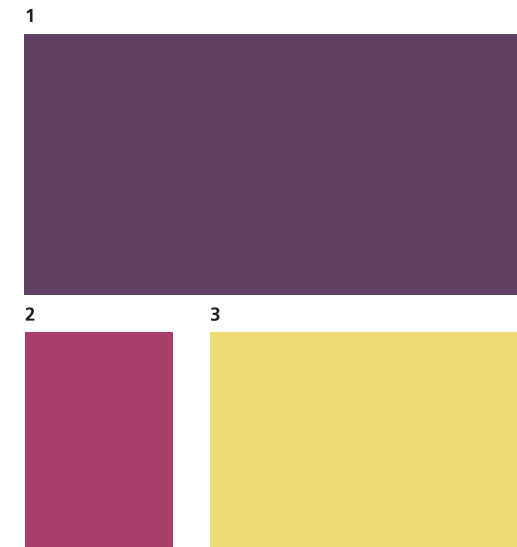
HARMONIOUS TONES

*Imitating the colours
we observe when light
is refracted creates a
natural harmony*



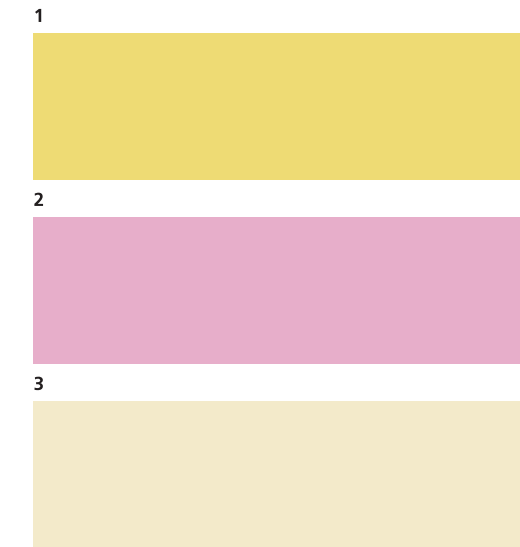
Opposite

- 1 Grape Freeze NP AC 2089 A
- 2 Latin Dance NP R 1309 A
- 3 Yellow Pendant NP YO 1105 T



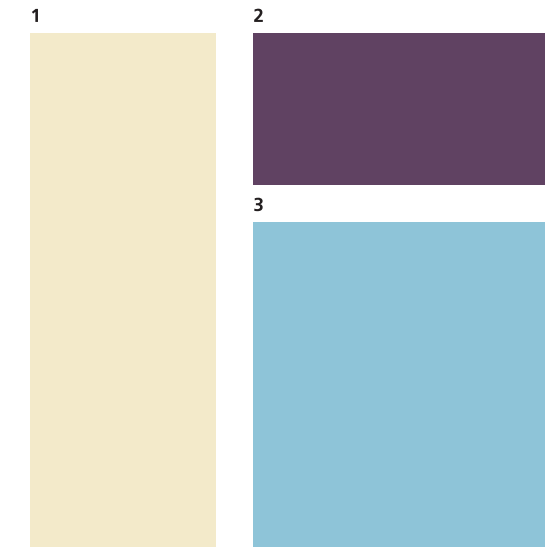
Below left

- 1 Yellow Pendant NP YO 1105 T
- 2 Pink Balloon NP R 1326 P
- 3 Gossamer White NP OW 1015 P



Below right

- 1 Gossamer White NP OW 1015 P
- 2 Grape Freeze NP AC 2089 A
- 3 Winning Streak NP BGG 1566 P



Subtle gradients and prismatic tones create a mood of gentle optimism. In an interplay of ethereal and blurred effects, a sense of dreamy lightness is enhanced.



LIGHTWEIGHT



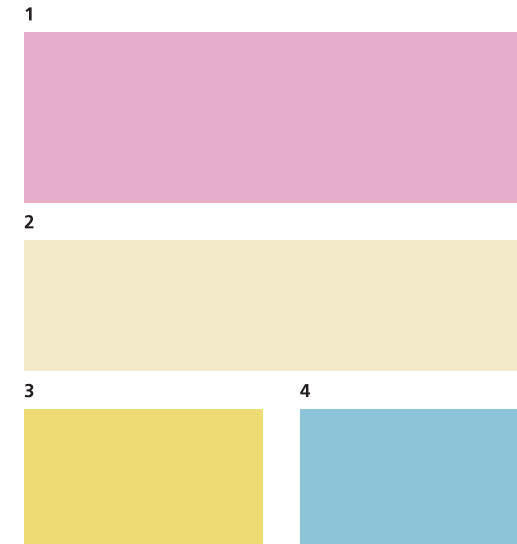
PLAYFUL COMBINATIONS

Experience *happiness*
and *wellbeing*
through playful pastel
combinations



Opposite

- 1 Pink Balloon NP R 1326 P
- 2 Gossamer White NP OW 1015 P
- 3 Yellow Pendant NP YO 1105 T
- 4 Winning Streak NP BGG 1566 P



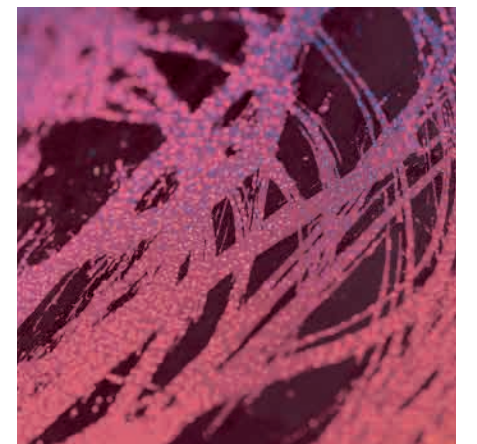
Below

- 1 Gossamer White NP OW 1015 P
- 2 Metallic Peony Pink MET 004
- 3 Grape Freeze NP AC 2089 A



Colour in Focus

An important element of *Transient Glow* is the movement and interplay of pinks and purples. Unifying this group is *Latin Dance NP R 1309 A*. This complex red-tinted purple is both dynamic and supportive and able to stand alone or blend, its shifting role is a mirror to the story as a whole.



PAINTED OBJECTS



Explore the range of possibilities in *Transient Glow*. Delicate layers create a poetic mood while interactions of solid pinks and purples reveal an unexpected harmony.

“

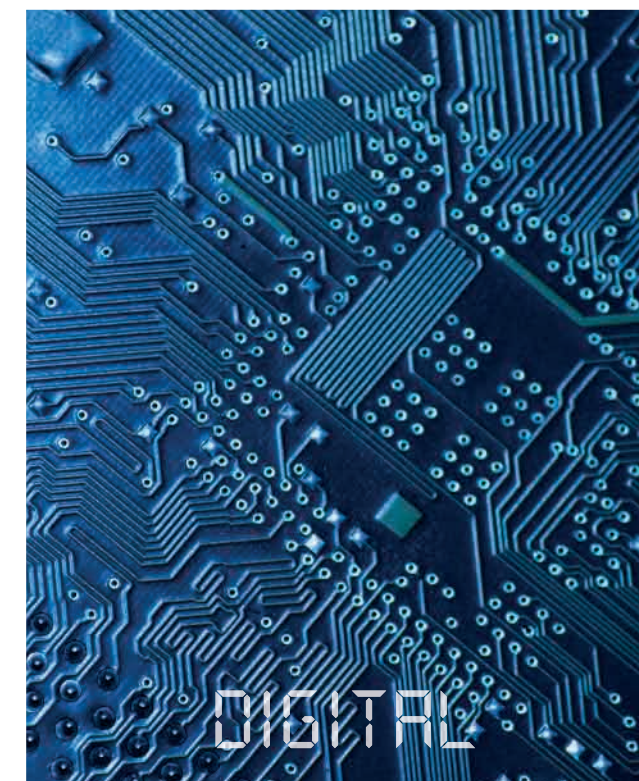
OPEN YOUR MIND TO THE
OPTIMISTIC AND DREAMLIKE
SHADES OF TRANSIENT
GLOW. ENHANCE FEELINGS OF
CREATIVITY AND POSITIVITY IN
THIS POETIC PALETTE OF PURE
PASTELS, PINKS AND PURPLES.

”



02 CONSCIOUS BEING

ARTIFICIAL
INDUSTRIAL
ELECTRIC
HUMANOID
ROBOTIC



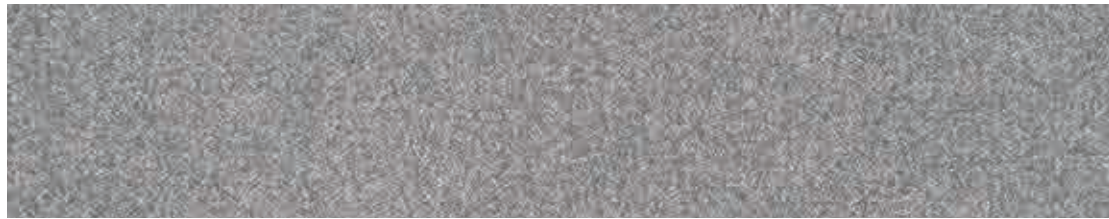
We live in a digital age and with each day as technology becomes smarter and more intuitive we confront the blurring line between human and machine. In facing this uncharted territory, there is an equal feeling of excitement and natural tension. As a global leader in both development and interaction with technology, South East Asia is perfectly poised to embrace this trend of Conscious Being.



Ebony Blue
NP N 2002 A



Metallic Olive Green
MET 009



Metallic Iron Ore
MET 030



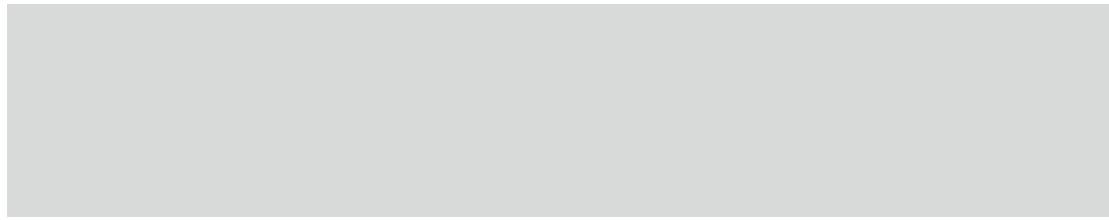
Electrify
NP AC 2097 A



Blessed Purple
NP AC 2092 A



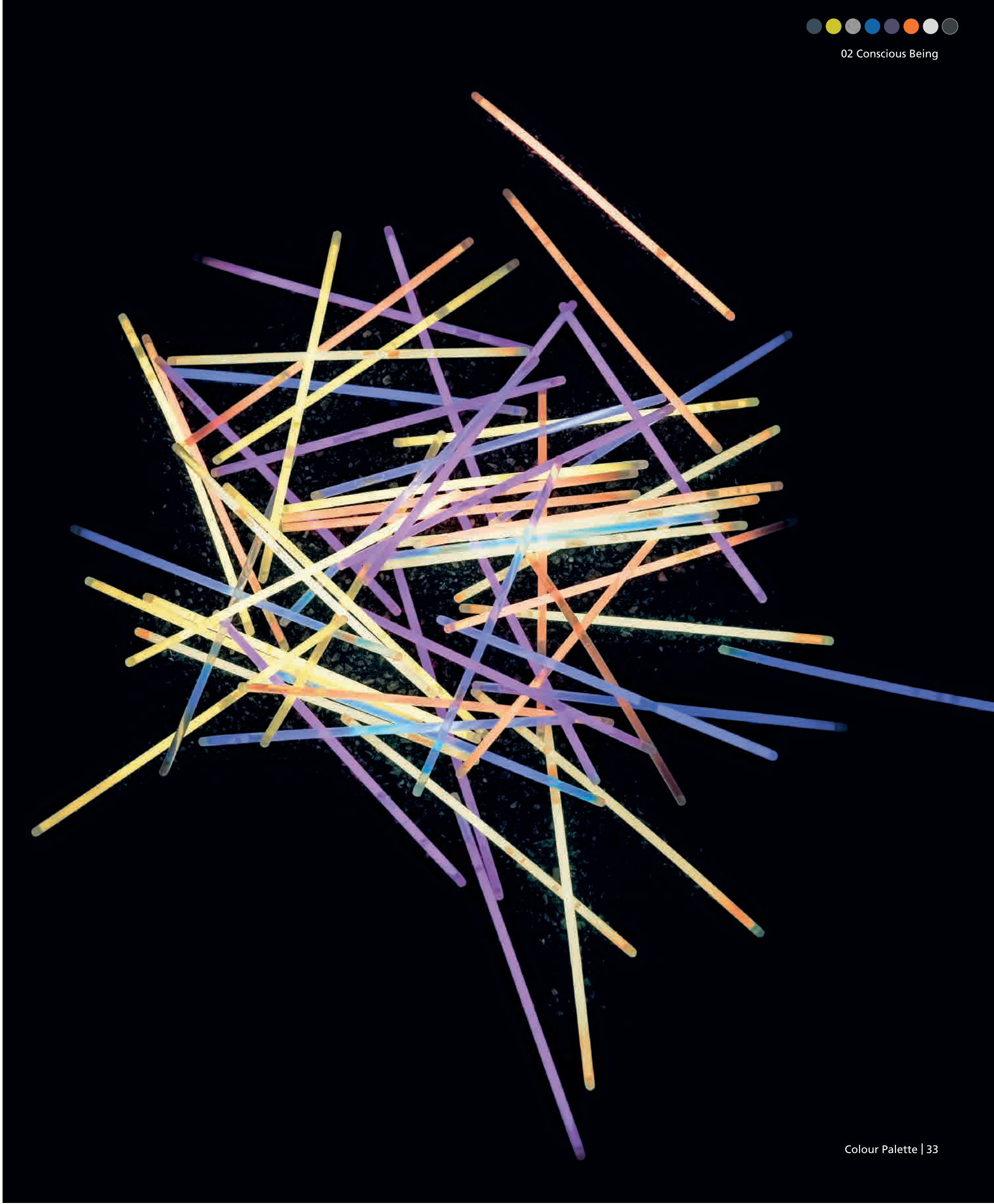
So Orange
NP AC 2064 A



Remembrance
NP OW 1053 P

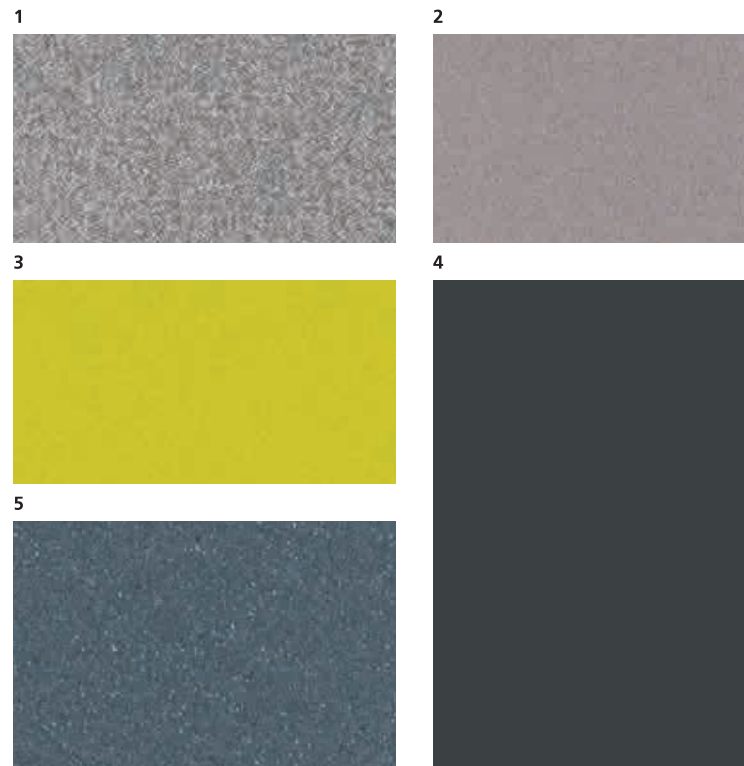


Black Magic
NP N 1988 A



The **futuristic atmosphere** of Conscious Being is played out in a palette blended from **synthetic and organic tones** with vibrant **electric punches** and **industrial metallics** to harness the energy in technological advance. In the uncompromising definition of these hues lies a cool confidence and sophistication.

INDUSTRIAL

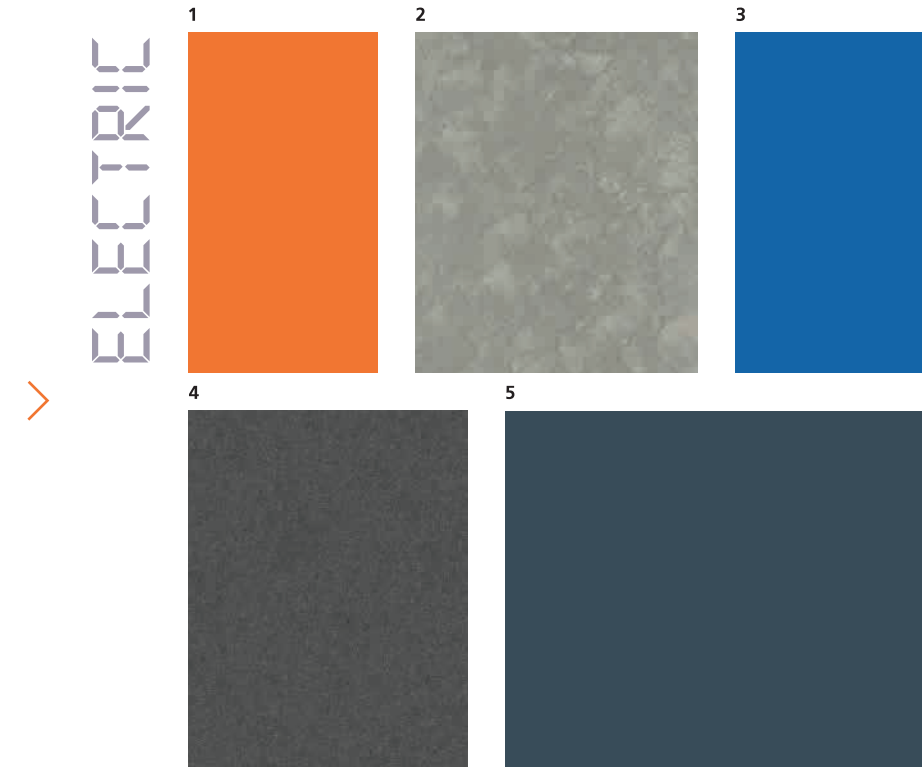


- 1 Metallic Iron Ore MET 030
- 2 Micaceous Iron Oxide Bleached Grey 910
- 3 Metallic Olive Green MET 009
- 4 Black Magic NP N 1988 A
- 5 Momento Designers Series Velvet Pearl

Base: Miner Gray NPN 2004T (3242T) Finish: Gray Goose VP 250

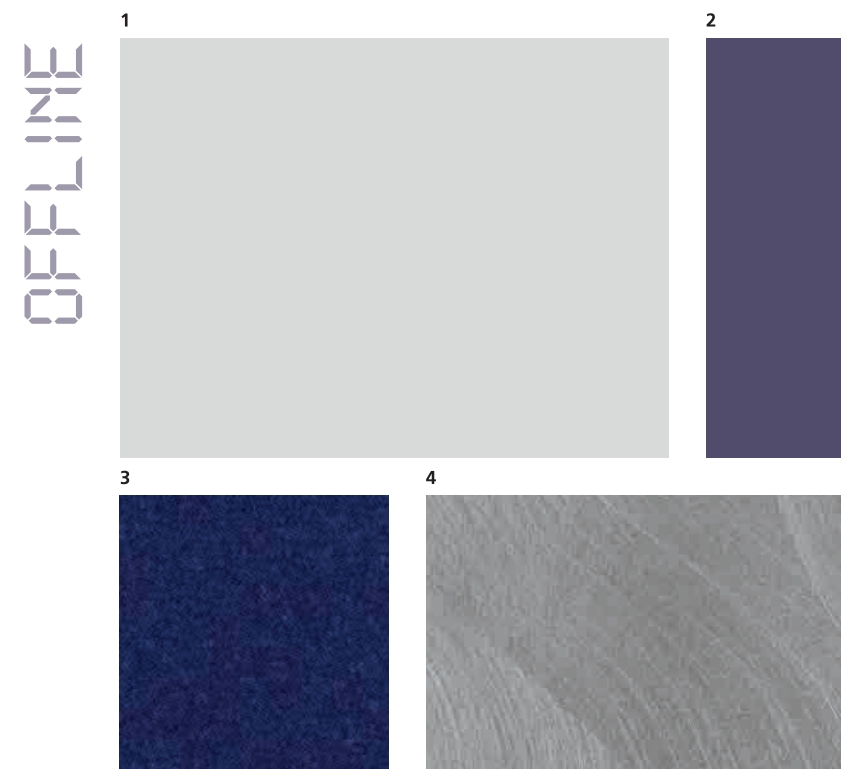
Metallic finishes combine to evoke a mechanical mood. In the iridescence of Velvet Pearl⁵ and the striking definition of Black Magic⁴ we are reminded of industrial machines. The smooth finish and warm undertone of Bleached Grey² bring a welcome human element making this combination perfect for interiors and offices.

This group of **cool greys and blues** is cut through with artificial brights for an arresting palette, ideal for hospitality spaces and public building exteriors. Using Textured Paint Sparkle Silver² and the dense Ebony Blue⁵ in larger proportions creates a quiet stage for So Orange¹ and Electrify³ to really pop.



- 1 So Orange NP AC 2064 A
- 2 Momento Textured Series Sparkle Silver Steel Charcoal MS 152
- 3 Electrify NP AC 2097 A
- 4 Micaceous Iron Oxide Grey Black 906
- 5 Ebony Blue NP N 2002 A

- 1 Remembrance NP OW 1053 P
- 2 Blessed Purple NP AC 2092 A
- 3 Metallic Gypsy Blue MET 015
- 4 Momento Designers Series Optical Man of Steel OP 300



This **calming group** reduces noise to a minimum. Against a canvas of whisper-soft Remembrance grey¹, the deep tone of Blessed Purple² grounds and accents. Special effects of Optical⁴ or Metallic Gypsy Blue³ add another dimension making this a beautiful choice for the home and especially bedrooms.

POPS OF COLOUR

*Bring a futuristic
feel to building
exteriors with electric
shocks of colour*



The human and synthetic dynamism of this palette enables diverse realisations. From the restraint of multi layered cool tones in quiet spaces to the invigorating and intellectually stimulating blues that enliven social areas.



Opposite

- 1 Remembrance NP OW 1053 P
- 2 Black Magic NP N 1988 A
- 3 So Orange NP AC 2064 A



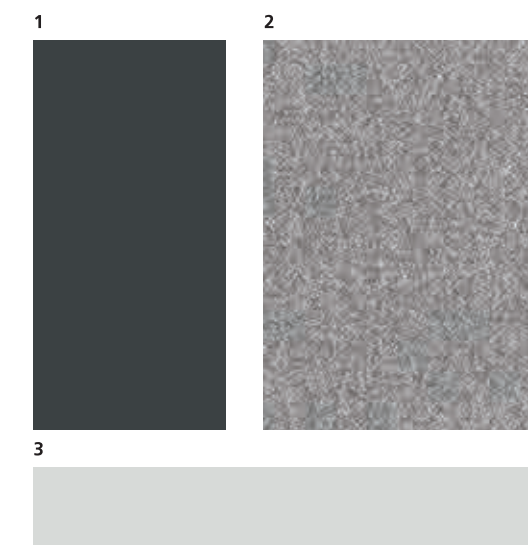
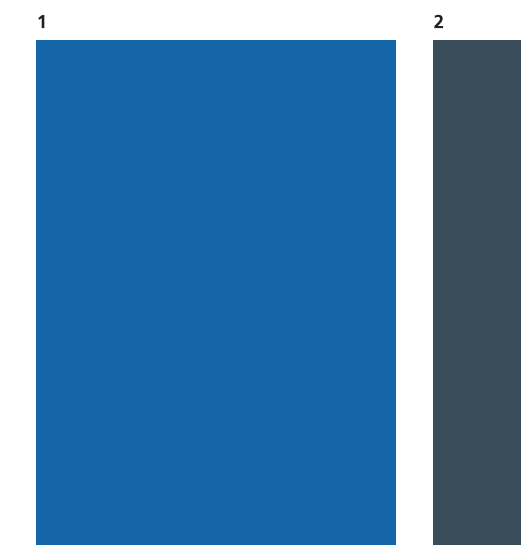
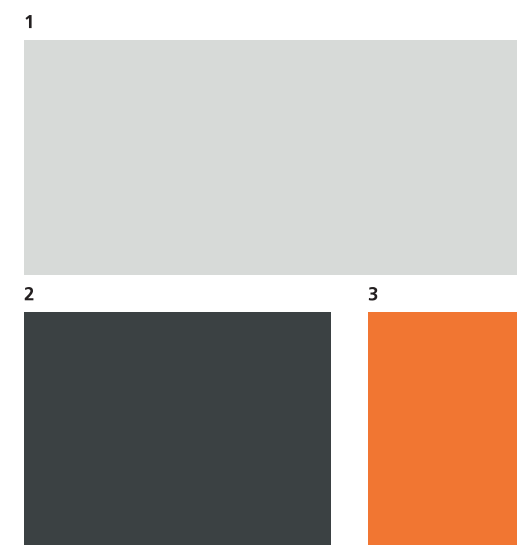
Above left

- 1 Electrify NP AC 2097 A
- 2 Ebony Blue NP N 2002 A



Above right

- 1 Black Magic NP N 1988 A
- 2 Metallic Iron Ore MET 030
- 3 Remembrance NP OW 1053 P



Dark blue and purple
add a soothing
sophistication to
meditative spaces

DARK ATMOSPHERES



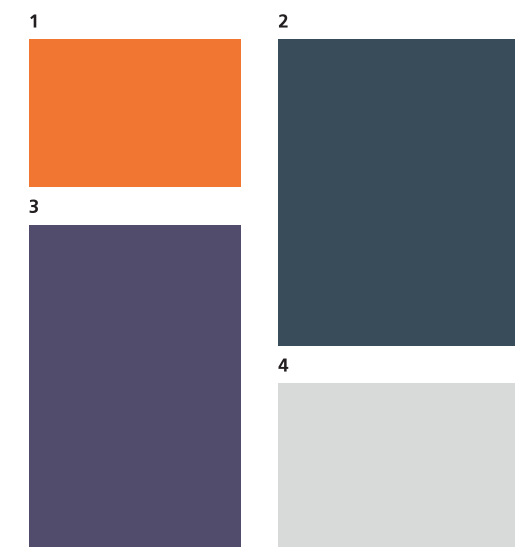
Opposite

- 1 Ebony Blue NP N 2002 A
- 2 Remembrance NP OW 1053 P
- 3 Blessed Purple NP AC 2092 A



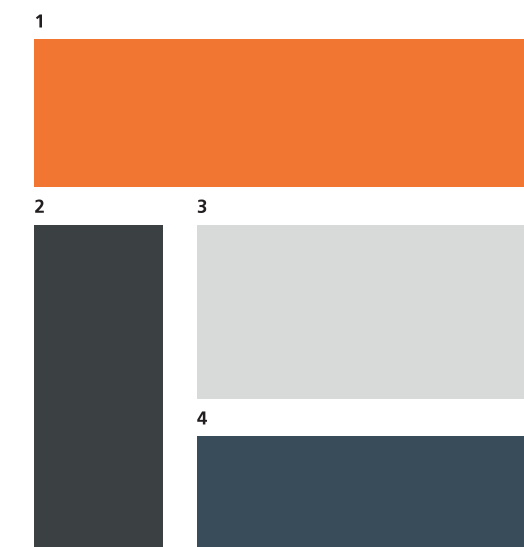
Below left

- 1 So Orange NP AC 2064 A
- 2 Ebony Blue NP N 2002 A
- 3 Blessed Purple NP AC 2092 A
- 4 Remembrance NP OW 1053 P



Below right

- 1 So Orange NP AC 2064 A
- 2 Black Magic NP N 1988 A
- 3 Remembrance NP OW 1053 P
- 4 Ebony Blue NP N 2002 A



Public buildings and social spaces come alive with the energy of the Conscious Being palette. Artificial elements provide micro flashes of futurism against more organic and human design.



*Embrace the synergy
of man and machine
in engineered styling
and energetic tones*

INDUSTRIAL STYLE



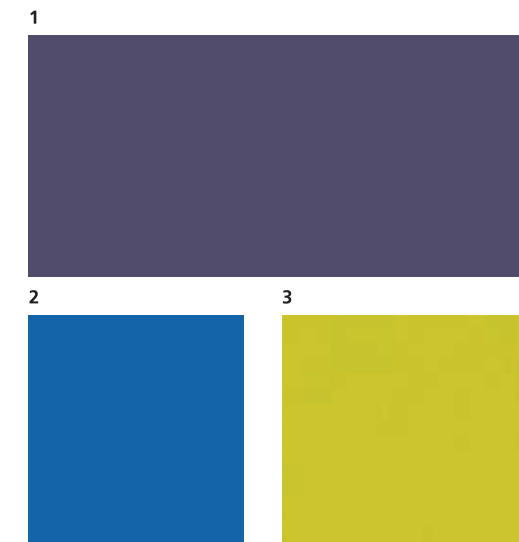
Opposite

- 1 Electrify NP AC 2097 A
- 2 Remembrance NP OW 1053 P
- 3 Ebony Blue NP N 2002 A
- 4 So Orange NP AC 2064 A



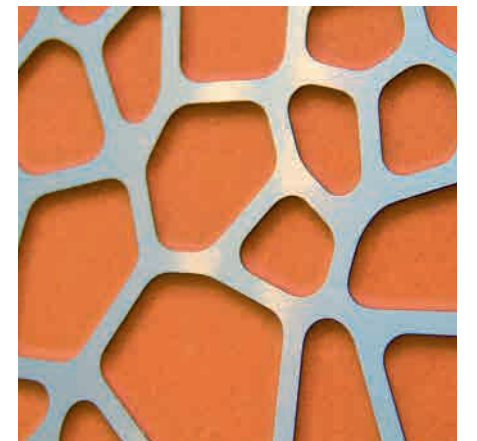
Above

- 1 Blessed Purple NP AC 2092 A
- 2 Electrify NP AC 2097 A
- 3 Metallic Olive Green MET 009

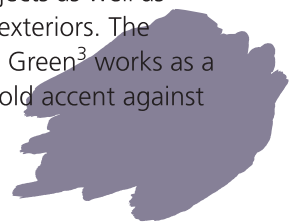


Colour in Focus

Essential to the synthetic and sometimes cold aspect of the palette is the zesty vibrance of So Orange NP AC 2064 A. This naturally uplifting shade is thought to turn our thoughts to physical comforts and, as an appetite stimulator, it is a thoughtful addition to a restaurant or dining room feature wall.



The metallic tones add versatility to the palette as they can be applied to objects as well as interiors and exteriors. The Metallic Olive Green³ works as a lively green-gold accent against cooler tones.





EMBRACE THE POSSIBILITIES
OF AN ENGINEERED LIFE IN
CONSCIOUS BEING. IN A LANDSCAPE
OF DIGITAL AND INDUSTRIAL
NEUTRALS, EXPERIENCE A CALM
HUMAN ELEMENT, AND DELIGHT IN
UNEXPECTED JOLTS OF COLOUR.

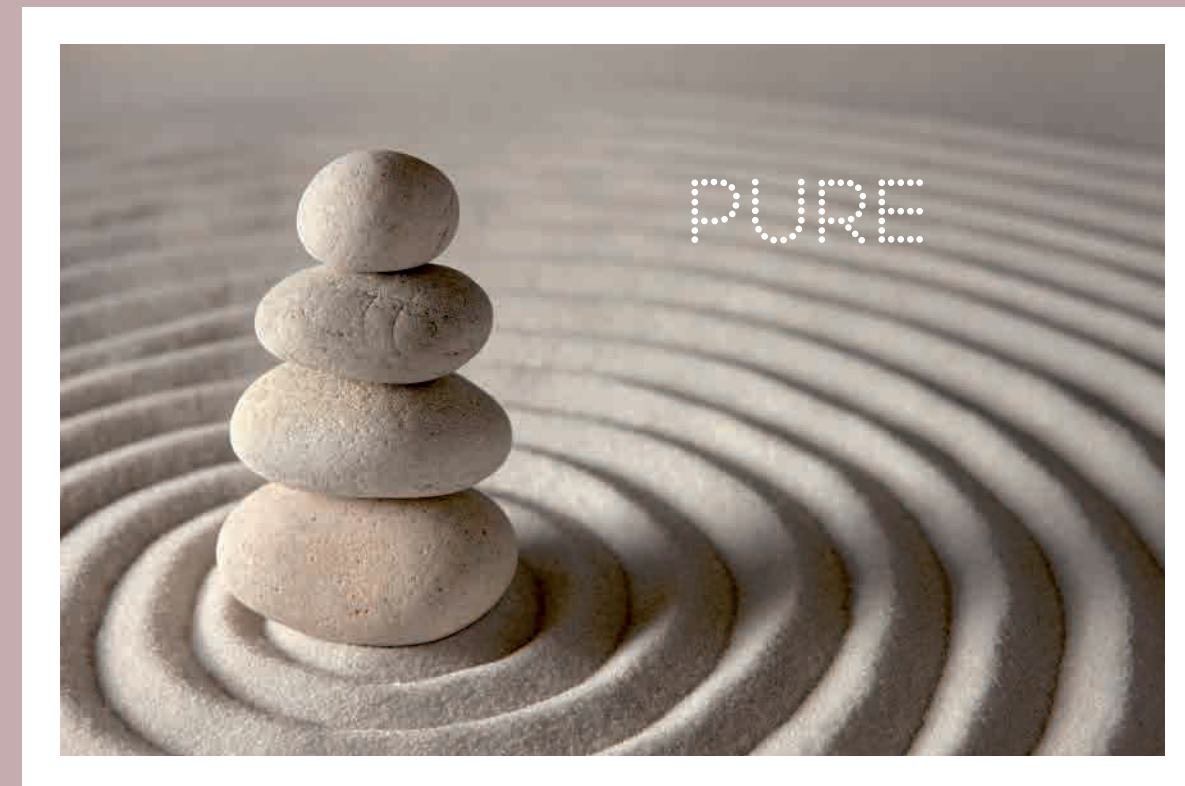




03 ESSENTIAL BALANCE

ESSENTIAL
TRANQUIL
QUIET
MINIMALIST
NATURAL

With a meditative approach, Essential Balance reflects our innate need to take time out in quiet reflection. As we strip back the unnecessary to focus on the vital, we experience renewed appreciation of slow crafts and a natural aesthetic. In a region such as Asia with its multiple cultures, it is the universality of this message that unifies.





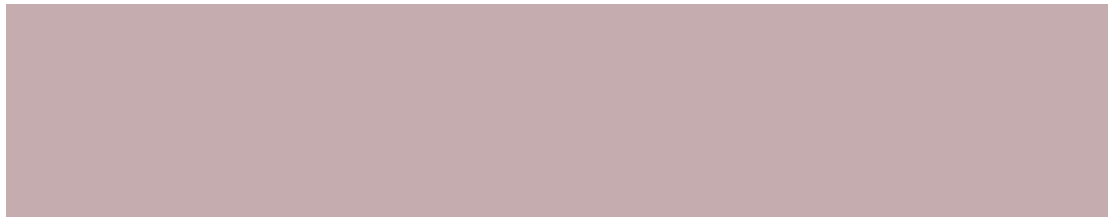
Spoonbread
NP YO 1171 P



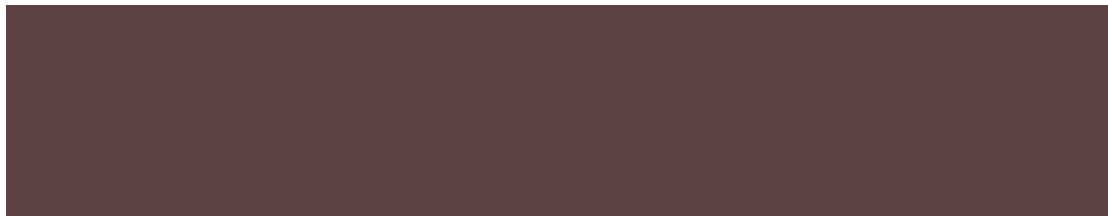
Trojan Gray
NP N 1996 D



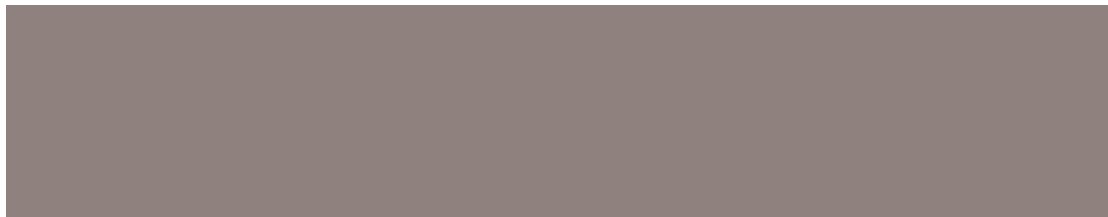
Bed Time Stories
NP N 2019 P



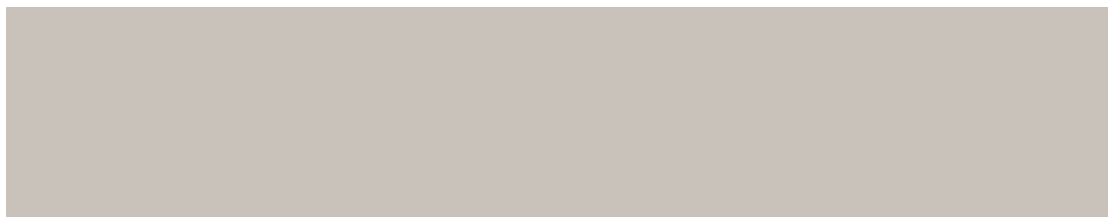
Mountain Haze
NP N 1894 P



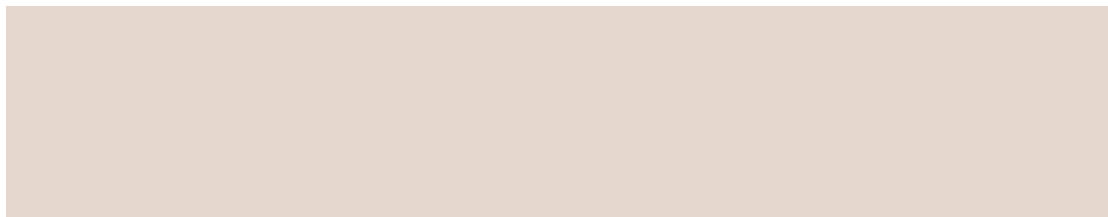
Tempest Brown
NP N 1897 A



Harrison Gray
NP N 1912 T



Abacadabra
NP N 2034 P



Drifting Cloud
NP OW 1035 P



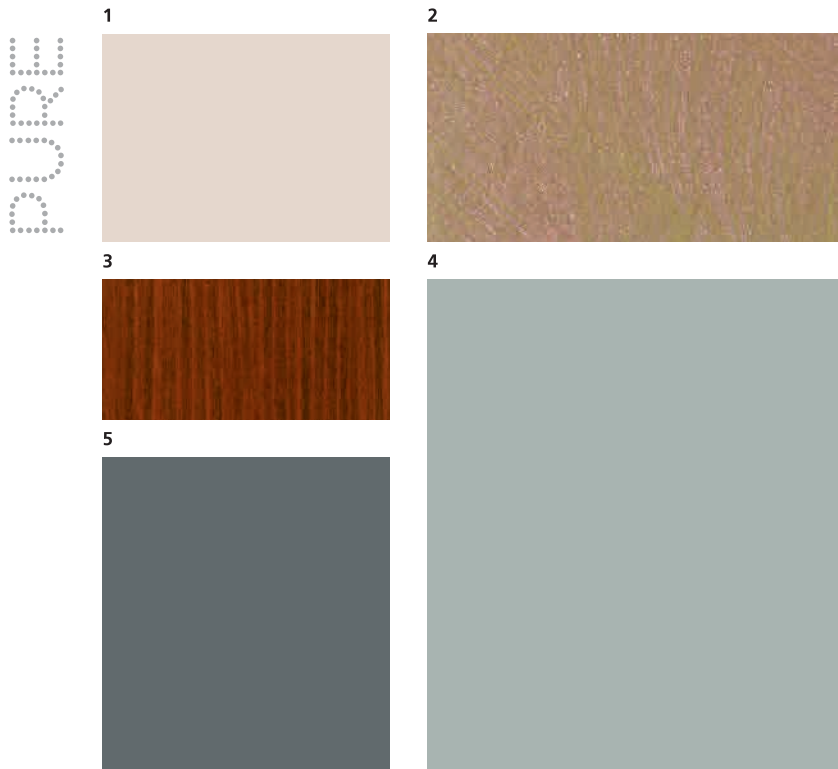
Referencing nature, Essential Balance has a strong connection to the raw organic world and uses warming neutrals and timeless tonal shades to comfort and calm. Subtle colours combine with organic surfaces and refined special effects for a sense of purity and restful quality.



- 1 Stone Art Platinum Grey SRS 01
Base: Quarry Pebble 720
- 2 Abacadabra NP N 2034 P
- 3 Wood Varnish Forrest Blue T 189
- 4 Harrison Gray NP N 1912 T

Tinted greys are paired to create a subtle and calming atmosphere, referencing a connection to raw natural aesthetics. The soft shades of Harrison Gray⁴ and Abacadabra² are further grounded by the natural looking special effect paints. Discover elemental purity with this pairing and create a timeless elegance that is a balanced option for exterior applications.

The cool greyed-off hues of Trojan Gray⁵ and Bed Time Stories⁴ combine with natural surfaces for a tranquil and quiet grouping. The purity of Drifting Cloud¹ is warmed by pearlescent effects and red wood tints. These colours and special effects invite touch and have a slow and peaceful atmosphere, ideal for interior applications.



- 1 Drifting Cloud NP OW 1035 P
- 2 Momento Enhancer Series Cloud Pearl
Base: Golden Sage 3033D Glaze: Orange Burst CP 177
- 3 Wood Varnish Vanilla Brown T 129
- 4 Bed Time Stories NP N 2019 P
- 5 Trojan Gray NP N 1996 D

- 1 Tempest Brown NP N 1897 A
- 2 Mountain Haze NP N 1894 P
- 3 Spoonbread NP YO 1171 P
- 4 Momento Textured Series Elegant Meteor Shower ME 043
- 5 Micaceous Iron Oxide Dry Clay 911

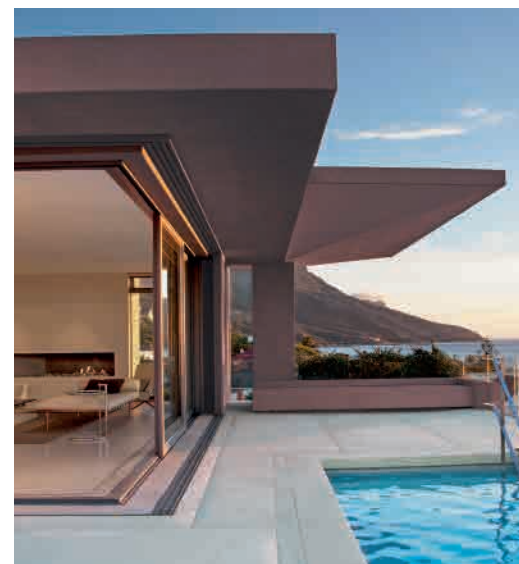


Reassuring warm tones combine for a soothing option, where glowing Spoonbread³ and tinted Mountain Haze² join to create a comforting atmosphere. Build a personal sanctuary with the cocooning colours and organic natural surfaces within this grouping to create moments of restful serenity. A solution well suited to public spaces.

WARMING ATMOSPHERE



*Bring serenity into
your private spaces
and create an elegant
sanctuary*

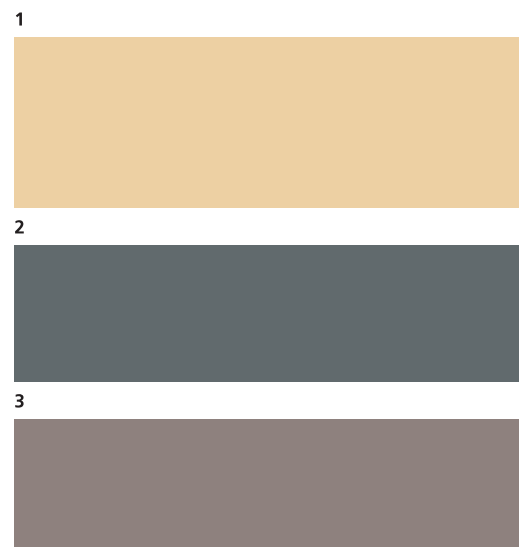


Tonal shades combine in the Essential Balance palette for a sense of quiet tranquility. Use these warm and cool neutrals to create a restful and comforting atmosphere, ideal for interior and exterior applications.



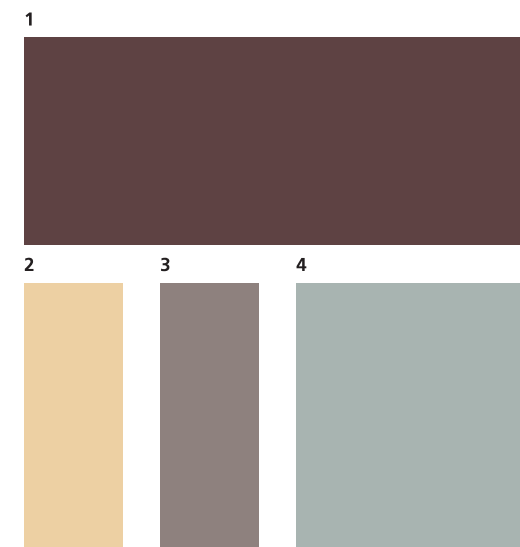
Opposite

- 1 Spoonbread NP YO 1171 P
- 2 Trojan Gray NP N 1996 D
- 3 Harrison Gray NP N 1912 T



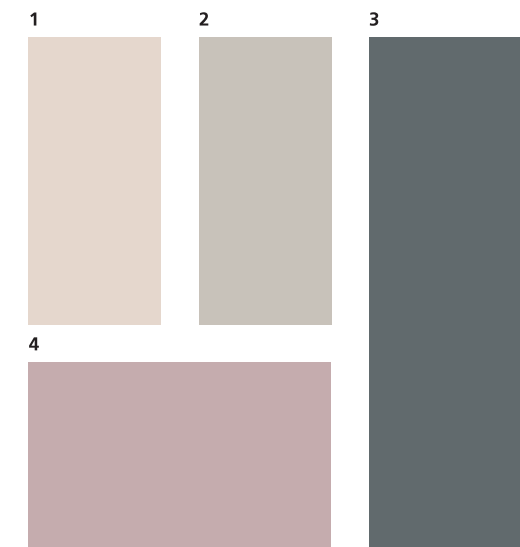
Above left

- 1 Tempest Brown NP N 1897 A
- 2 Spoonbread NP YO 1171 P
- 3 Harrison Gray NP N 1912 T
- 4 Bed Time Stories NP N 2019 P



Above right

- 1 Drifting Cloud NP OW 1035 P
- 2 Abacadabra NP N 2034 P
- 3 Trojan Gray NP N 1996 D
- 4 Mountain Haze NP N 1894 P



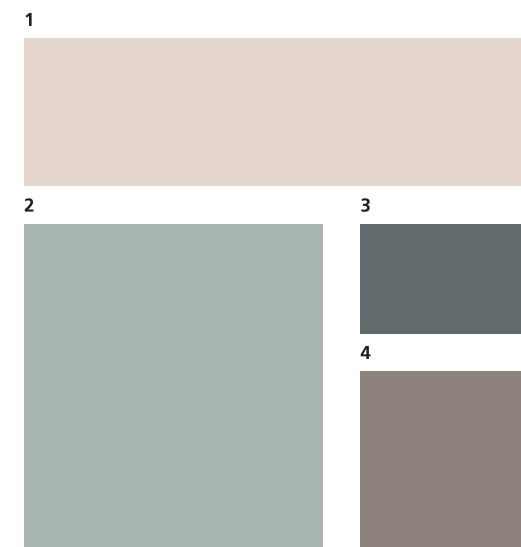
COLD NEUTRALS

Cooling tones add a touch of sophisticated calm to your interiors



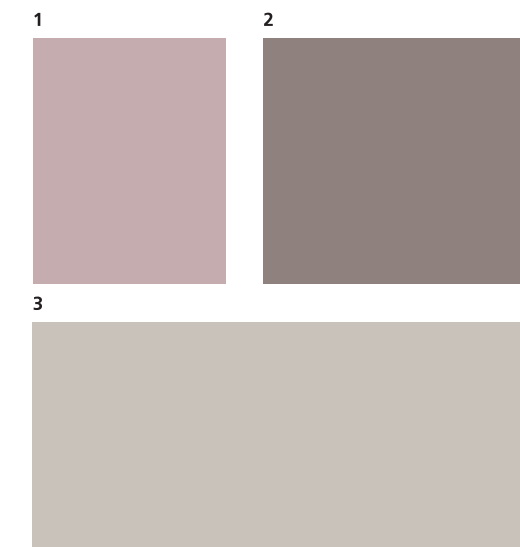
Opposite

- 1 Drifting Cloud NP OW 1035 P
- 2 Bed Time Stories NP N 2019 P
- 3 Trojan Gray NP N 1996 D
- 4 Harrison Gray NP N 1912 T



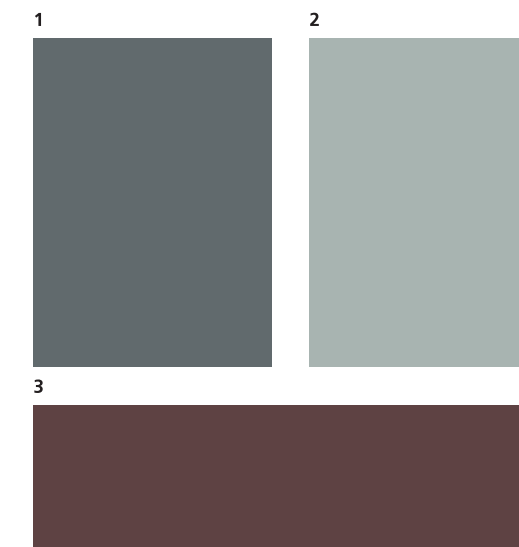
Below left

- 1 Mountain Haze NP N 1894 P
- 2 Harrison Gray NP N 1912 T
- 3 Abacadabra NP N 2034 P



Below right

- 1 Trojan Gray NP N 1996 D
- 2 Bed Time Stories NP N 2019 P
- 3 Tempest Brown NP N 1897 A



Warming highlights echo a sense of reflective quiet that creates a timeless elegant look. Sophisticated spaces are enhanced with the diverse neutrals of Essential Balance; the ultimate option for interiors.



Enhance the comfort of
your spaces by adding
cosy knitted textiles

COOONING



Opposite

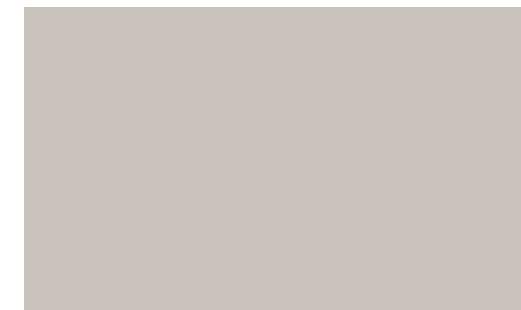
- 1 Abacadabra NP N 2034 P
- 2 Drifting Cloud NP OW 1035 P
- 3 Bed Time Stories NP N 2019 P



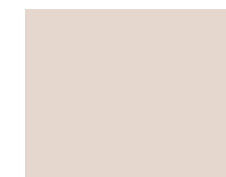
Below

- 1 Drifting Cloud NP OW 1035 P
- 2 Bed Time Stories NP N 2019 P
- 3 Mountain Haze NP N 1894 P

1



2



3



1



2

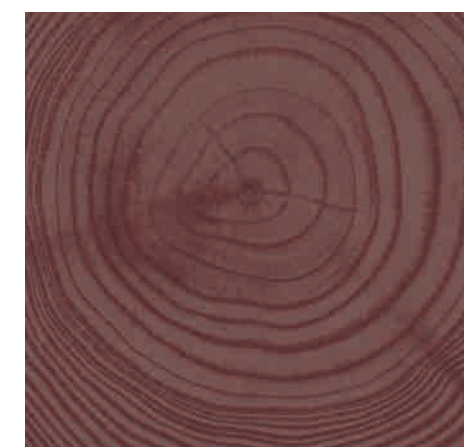
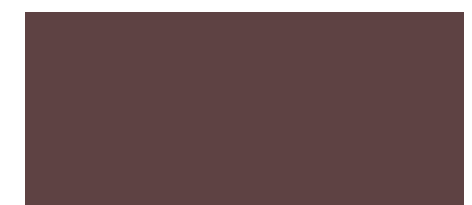


3



Colour in Focus

A key colour to highlight
from *Essential Balance* is
Tempest Brown NP N 1897 A.
Noting a return of natural
brown shades for 2018/19,
this deep, warm and comforting
tone provides calming depth
for interiors. Apply to feature
walls or use as a contrasting
accent for a premium feel.



Highlight the key details of your
spaces with the light and soft
shades of *Essential Balance*.
Breathing a freshness into
spaces, this palette focuses
on minimalist aesthetics and
considered colour combinations.

DISCOVER AN ESSENTIAL
BALANCE AND CREATE A
MEDITATIVE CALM WITH THESE
SHADES. OFFERING A SENSE
OF CLARITY AND A TOUCH OF
ELEGANCE, THESE DIVERSE
NEUTRALS CREATE A MOMENT
OF REFLECTION AND A TIMELESS
SENSE OF TRANQUILITY.



04 SEEKING ADVENTURE

NATURAL
RUGGED
THRILLING
EXTREME
FEARLESS



VOYAGE



SURVIVAL

Travel the world and explore the unknown in Seeking Adventure. As we understand the environmental challenges faced by our planet, we feel a sense of urgency to experience it at its fullest. In the Asia region, adventure follows affluence with a developing fascination with deep sea diving signaling an urge to roam more freely. From the highest mountain to the deepest ocean, it's time to awaken the explorer within us all.



Knockout Red
NP R 1281 A



Coral Expression
NP R 1275 D



Harbour
NP AC 2108 A



Ultra Blue
NP PB 1547 A



Memories
NP PB 1517 P



Pebble Walk
NP N 1817 P



Flint Black
NP N 2009 A

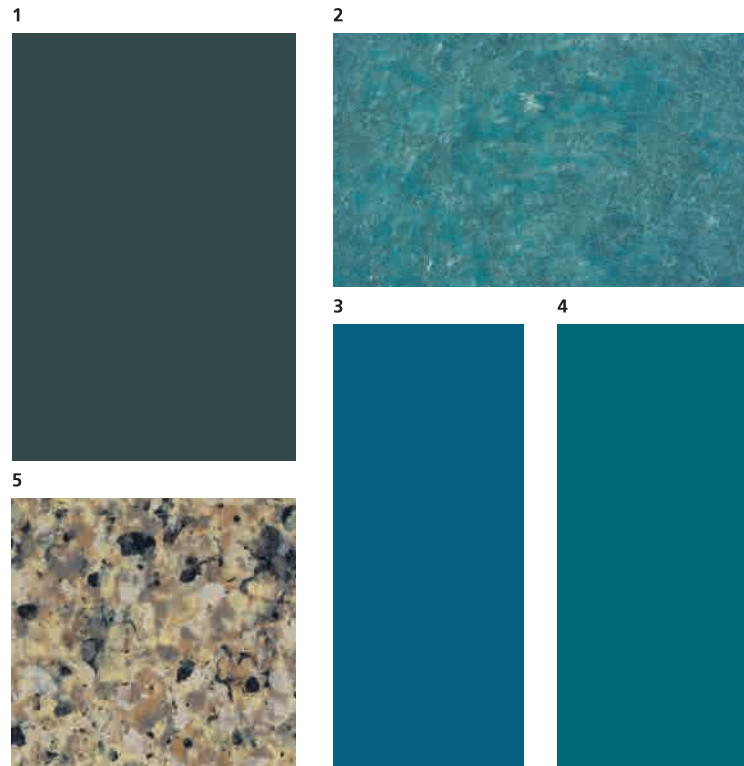


Green Shoot
NP BGG 1730 D



The engaging combinations in Seeking Adventure are realised through a free use of the special effect range in concert with a palette of saturated nature tones and organic neutrals. These dense yet nuanced brights speak to an excitement in nature's treasures while mineral shades ground us in the moment.

OCEAN

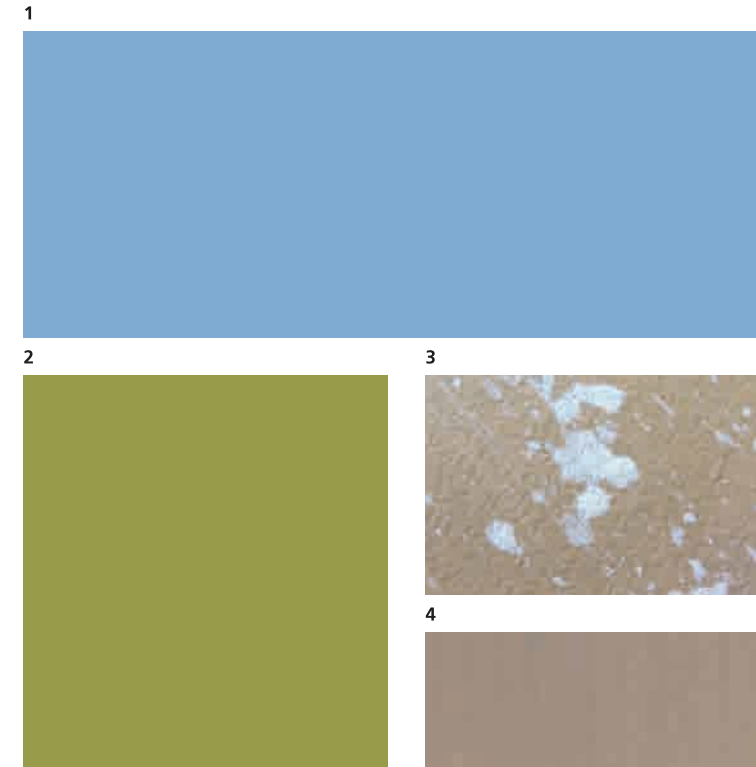


- 1 Flint Black NP N 2009 A
- 2 Momento Textured Series
Elegant Atlantis ME 027
- 3 Ultra Blue NP PB 1547 A
- 4 Harbour NP AC 2108 A
- 5 Stone Art Dessert Bloom SRN 08
Base: Sandstorm 134

The watery abyss is summoned in a multi level palette of ocean inspired tones. From the inky depths of Flint Black¹ we surface through aquatic blues with an application of Momento Textured Series on Elegant Atlantis², Ultra Blue³ and Harbour⁴ to an impression of a dry, sandy shore.

Inspired by Asian skies and terrains, the natural interplay of Memories¹ and Green Shoot² is an exercise in visual balance. In the layered Momento Enhancer Series of Snow Frost³ we find ourselves transported to snowy mountain caps, the bleached tint of Mercury Grey⁴ reflecting nature at altitude and bleached by the elements.

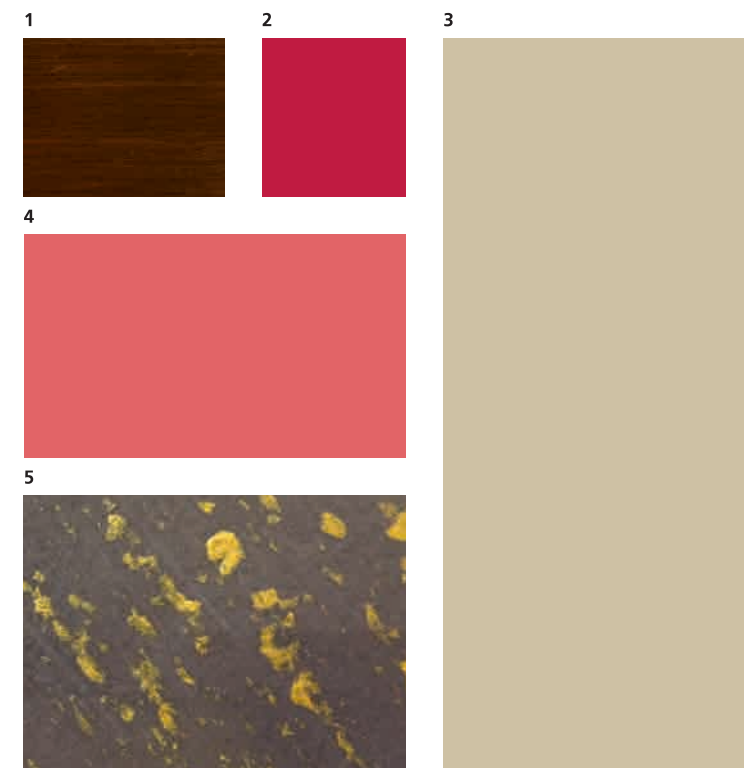
SKY



- 1 Memories NP PB 1517 P
- 2 Green Shoot NP BGG 1730 D
- 3 Momento Enhancer Series Snow Frost
Base: Shipsgate 491 Glaze: Snow Frost 01
- 4 Wood Varnish Mercury Grey T183

- 1 Wood Varnish Oak T111
- 2 Knockout Red NP R 1281 A
- 3 Pebble Walk NP N 1817 P
- 4 Coral Expression NP R 1275 D
- 5 Momento Enhancer Series Gold Frost
Base: Turned Earth 4203D Glaze: Gold Frost 03

EARTH



We pay tribute to the earth beneath our feet in celebrating the simplicity of Pebble Walk³ in a greater proportion. In the Gold Frost glaze on Turned Earth⁵ and the reassuring Wood Varnish Oak¹ we connect with the beauty in nature's surfaces, while the red duo remind us of it's dramatic possibilities.

DEEP BLUES



*Rich and immersive
blue-greens are the
most exhilarating of
nature's hues*

ADVENTUROUS RED



As an accent in a social space at home, or as a feature in exterior architecture, a punch of Coral Expression or Knockout Red brings the more delicate mineral tones to life.



Opposite

- 1 Ultra Blue NP PB 1547 A
- 2 Harbour NP AC 2108 A
- 3 Pebble Walk NP N 1817 P



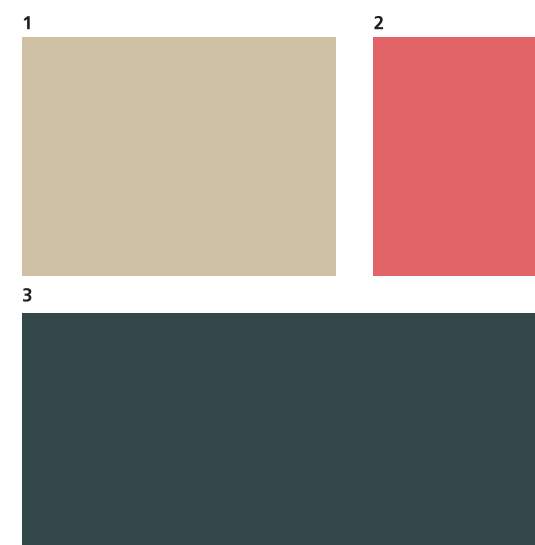
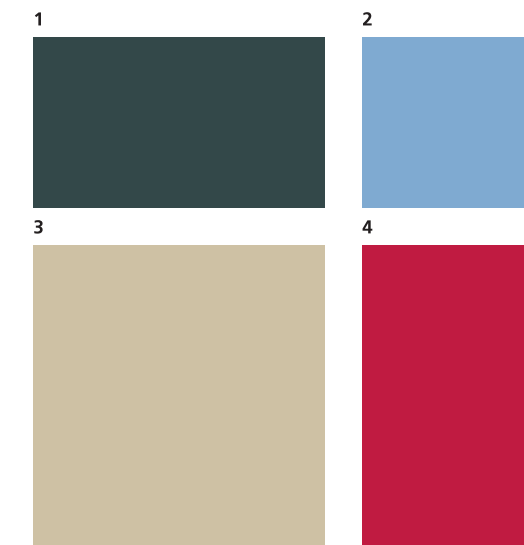
Above left

- 1 Flint Black NP N 2009 A
- 2 Memories NP PB 1517 P
- 3 Pebble Walk NP N 1817 P
- 4 Knockout Red NP R 1281 A



Above right

- 1 Pebble Walk NP N 1817 P
- 2 Coral Expression NP R 1275 D
- 3 Flint Black NP N 2009 A



*Echoing **extreme**
nature with an
attention grabbing
display of colours*

EYE-CATCHING FACADES



Opposite

- 1 Ultra Blue NP PB 1547 A
- 2 Coral Expression NP R 1275 D
- 3 Harbour NP AC 2108 A

1



2



3



Below left

- 1 Flint Black NP N 2009 A
- 2 Harbour NP AC 2108 A
- 3 Pebble Walk NP N 1817 P

1



2



3



Below right

- 1 Memories NP PB 1517 P
- 2 Pebble Walk NP N 1817 P
- 3 Coral Expression NP R 1275 D

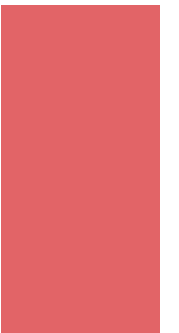
1



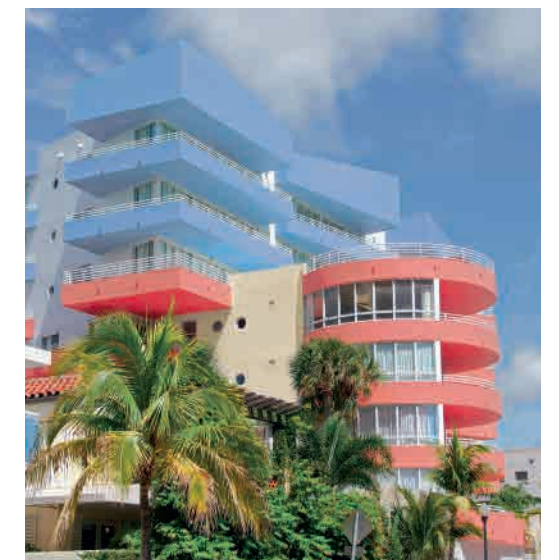
2



3



Aquatic tones reveal their versatility in creating moods from clarity and serenity to stimulating and invigorating. Pair with layered darks for a reflective feel, or accent with brights for immediate joy.



Recreate that *thrilling
adventure* with a pitch
perfect pop of colour

BOLD ACCENTS



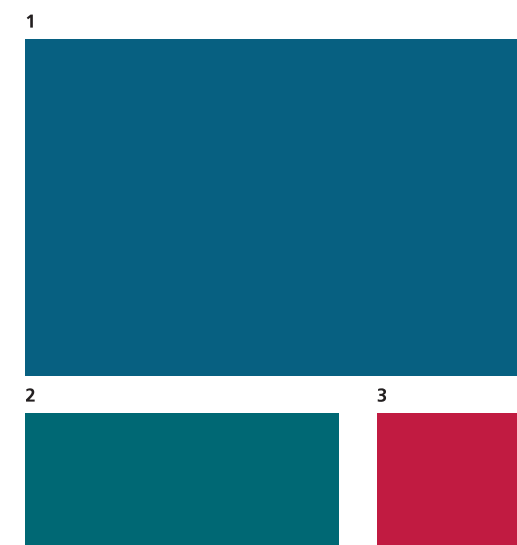
Colour in Focus

The most mysterious and unexplored depths of the sea are central to the allure of this story. In the saturated blue green of Harbour NP AC 2108 A we meet a composed, yet heroic colour that encapsulates the spirit of Seeking Adventure.



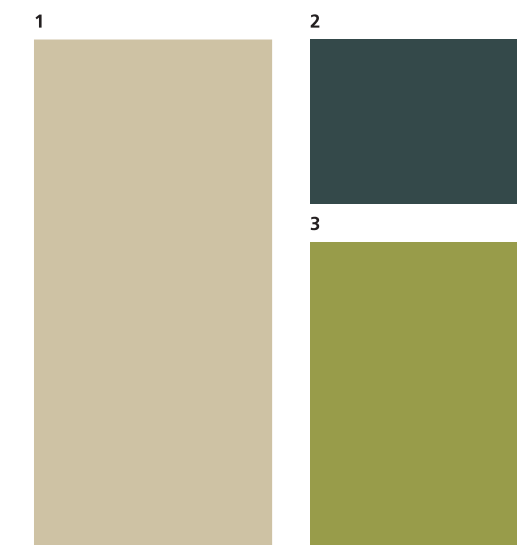
Opposite

- 1 Ultra Blue NP PB 1547 A
- 2 Harbour NP AC 2108 A
- 3 Knockout Red NP R 1281 A



Above

- 1 Pebble Walk NP N 1817 P
- 2 Flint Black NP N 2009 A
- 3 Green Shoot NP BGG 1730 D



Indulge your inner biophilic by adding succulent greenery and natural materials to your private spaces and offices. Bring nature indoors with these harmonious natural tones.

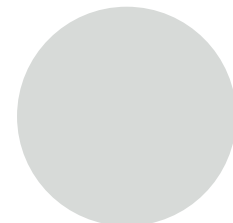
**THROW CAUTION TO THE WIND AND
EMBARK ON AN ADVENTURE INTO THE
UNKNOWN. OPEN YOUR EYES AND
HEART TO THE BEAUTY OF THE RUGGED
AND UNEXPLORED IN THIS BOLD AND
AUTHENTIC PALETTE.**



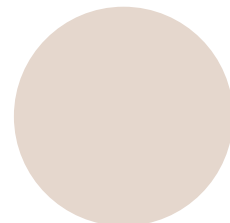
COLOUR FLOW

Contemporary neutrals are the enduring foundation of our 2018/19 colour collection. A series of meditative pales float softly above soothing mineral mid tones, echoing the coolness of stone and the warmth of sand. Saturated bitter Tempest Brown and Black Magic anchor this vital group. Oranges and reds exist to deliver a punch of electricity and invigorating heat, while yellows drift easily into mellow landscape greens.

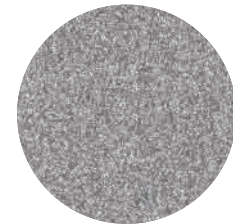
Our concise group of aquatics runs seamlessly into a range of complex and emotive blues. From the ethereal Memories to the shock of Electrify, this group is in turn immersive and stimulating. In an intriguing interplay of pinks and purples, the dreamlike poetry of Mountain Haze and Pink Balloon becomes at once dynamic and uplifting in Latin Dance and soothing in Grape Freeze and Blessed Purple.



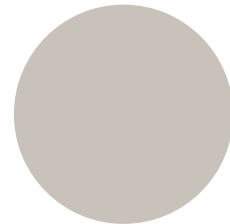
Remembrance
NP OW 1053 P



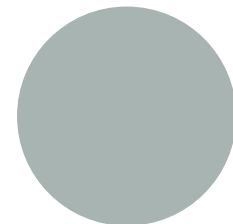
Drifting Cloud
NP OW 1035 P



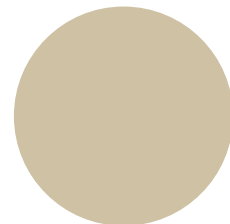
Metallic Iron Ore
MET 030



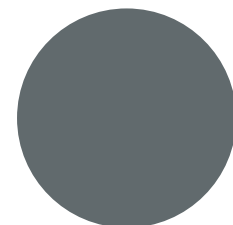
Abacadabra
NP N 2034 P



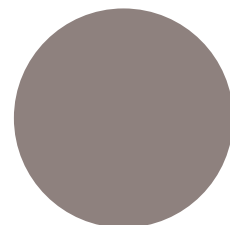
Bed Time Stories
NP N 2019 P



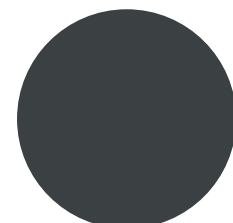
Pebble Walk
NP N 1817 P



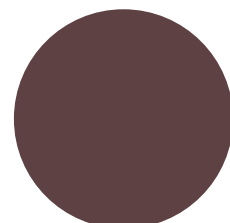
Trojan Gray
NP N 1996 D



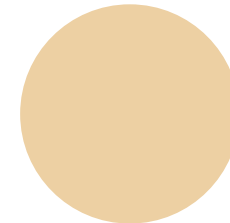
Harrison Gray
NP N 1912 T



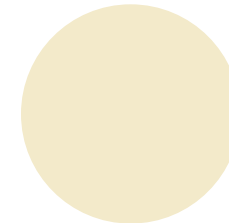
Black Magic
NP N 1988 A



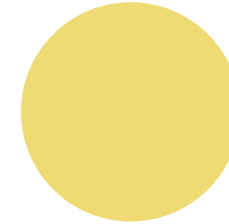
Tempest Brown
NP N 1897 A



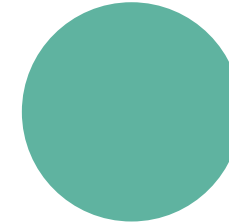
Spoonbread
NP YO 1171 P



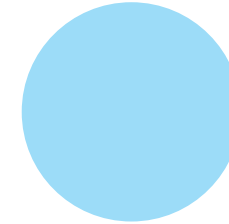
Gossamer White
NP OW 1015 P



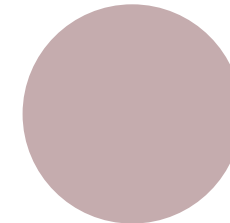
Yellow Pendant
NP YO 1105 T



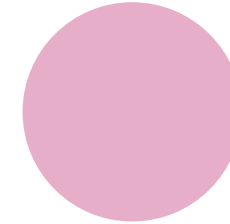
Aqua Glass
NP BGG 1612 T



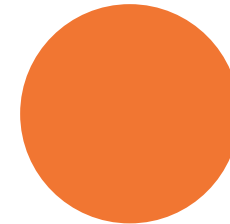
Winning Streak
NP BGG 1566 P



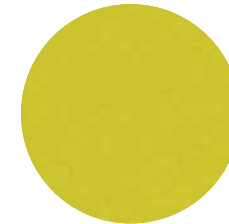
Mountain Haze
NP N 1894 P



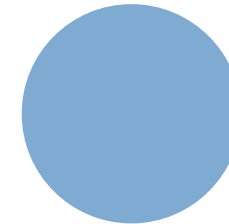
Pink Balloon
NP R 1326 P



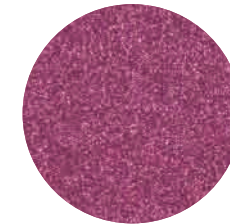
So Orange
NP AC 2064 A



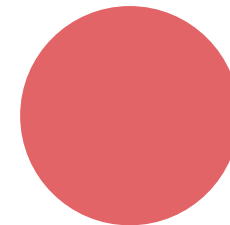
Metallic Olive Green
MET 009



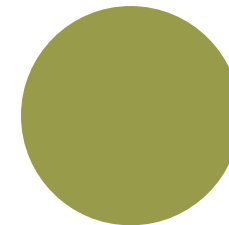
Memories
NP PB 1517 P



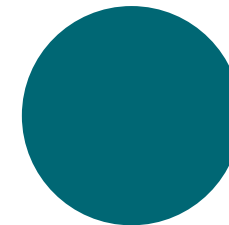
Metallic Peony Pink
MET 004



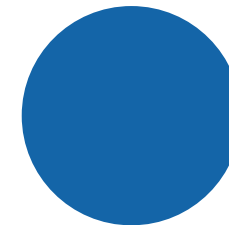
Coral Expression
NP R 1275 D



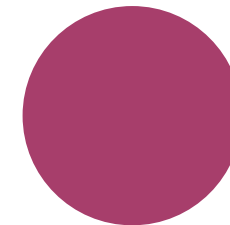
Green Shoot
NP BGG 1730 D



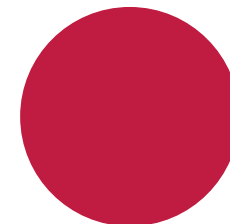
Harbour
NP AC 2108 A



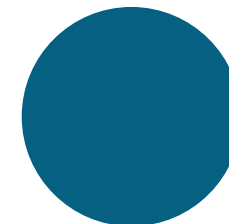
Electrify
NP AC 2097 A



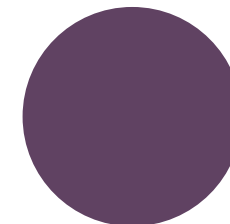
Latin Dance
NP R 1309 A



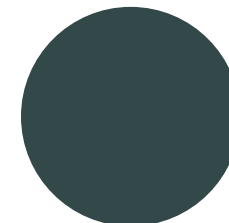
Knockout Red
NP R 1281 A



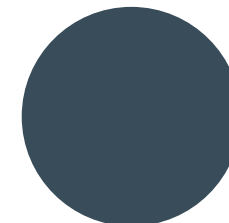
Ultra Blue
NP PB 1547 A



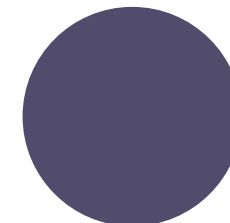
Grape Freeze
NP AC 2089 A



Flint Black
NP N 2009 A



Ebony Blue
NP N 2002 A



Blessed Purple
NP AC 2092 A

COLOUR EVOLUTION

2015/16

2016/17

Cold Neutrals – This group expands significantly to reflect an increasing desire for meditative tones with an organic and minimal presence. Grounded in nature, these cool minerals are authentic and pure.

Warm Neutrals – Balancing the cool hues are a gentle series of delicate warms designed to cocoon and gently ground with subtly nuanced shades.

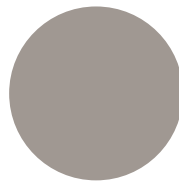
Reds & Oranges – Playing a concise but vital role as dominant accents in more subtly toned palettes, look to this group for a sudden burst of excitement.

Yellows & Greens – The scope of natural yellow develops to incorporate its transition into landscape greens. A clear pop of sunshine adds clarity and optimism.

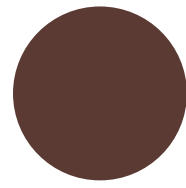
Turquoises – Aquatic greens reflect an evolving fascination with the ocean and this trio mirror the layers from clear shallows to inky depths.

Blues – The range of Blues becomes more nuanced as its role increases. The collection broadens to incorporate subtle dreamy shades, an immersive dark and an electrifying bright.

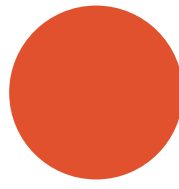
Pinks & Purples – The most significant evolution is the emergence of a comprehensive palette of pinks & purples. Integral to the mood of our stories, these hues deliver poetry, whimsy and vitality.



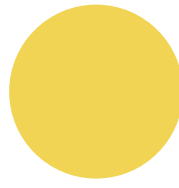
Dinosaur Gray
NP N 2042 P



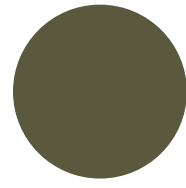
Painted Frame
NP N 1904 A



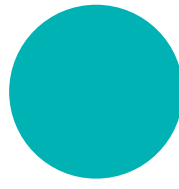
Carrothead
NP AC 2065 A



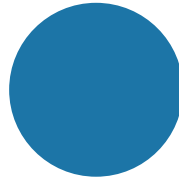
Yellow Jasmine
NP YO 1100 D



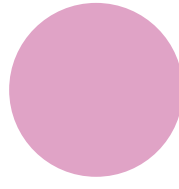
Esparina
NP BGG 1750 A



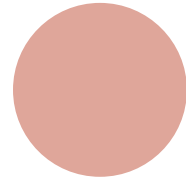
Persian Blue
NP BGG 1588 T



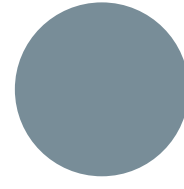
Blue Award
NP PB 1520 D



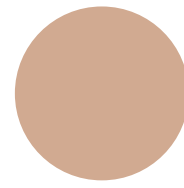
Pretty Box
NP R 1321 P



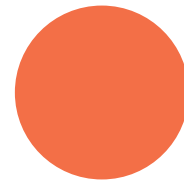
Olde Rose
NP N 1893 P



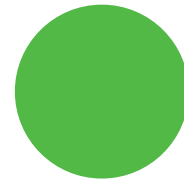
Gray Knight
NP N 2001 T



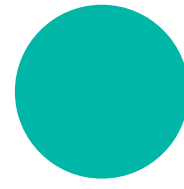
Tavern Buff
NP N 1867 P



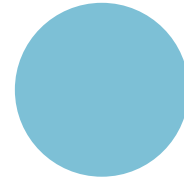
Being Peach
NP YO 1219 T



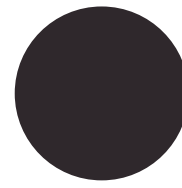
Green Tuft
NP BGG 1666 A



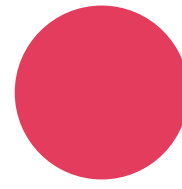
Lush
NP BGG 1605 T



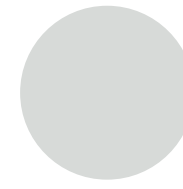
Blue Lullaby
NP PB 1550 P



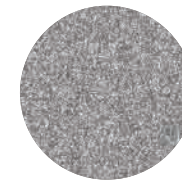
Volcanic Black
NP N 1918 A



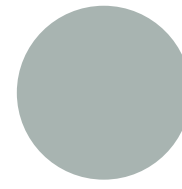
Fast Car
NP AC 2076 A



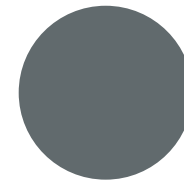
Remembrance
NP OW 1053 P



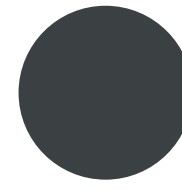
Metallic Iron Ore
MET 030



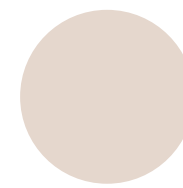
Bed Time Stories
NP N 2019 P



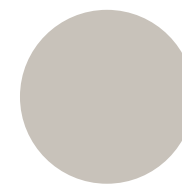
Trojan Gray
NP N 1996 D



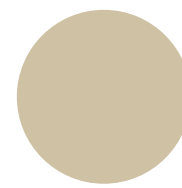
Black Magic
NP N 1988 A



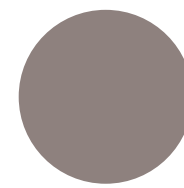
Drifting Cloud
NP OW 1035 P



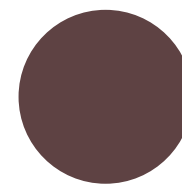
Abacadabra
NP N 2034 P



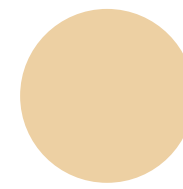
Pebble Walk
NP N 1817 P



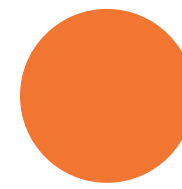
Harrison Gray
NP N 1912 T



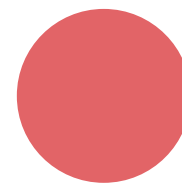
Tempest Brown
NP N 1897 A



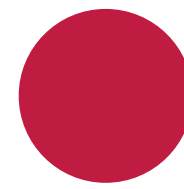
Spoonbread
NP YO 1171 P



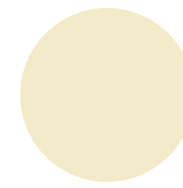
So Orange
NP AC 2064 A



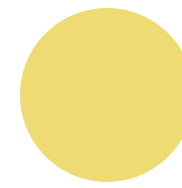
Coral Expression
NP R 1275 D



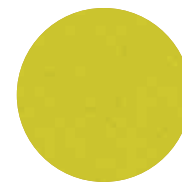
Knockout Red
NP R 1281 A



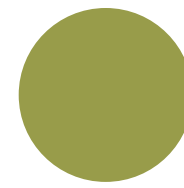
Gossamer White
NP OW 1015 P



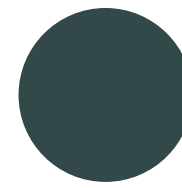
Yellow Pendant
NP YO 1105 T



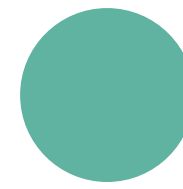
Metallic Olive Green
MET 009



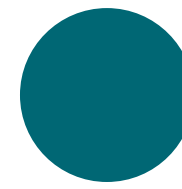
Green Shoot
NP BGG 1730 D



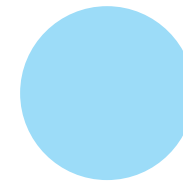
Flint Black
NP N 2009 A



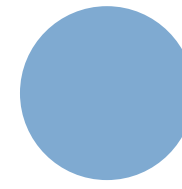
Aqua Glass
NP BGG 1612 T



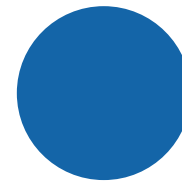
Harbour
NP AC 2108 A



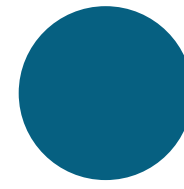
Winning Streak
NP BGG 1566 P



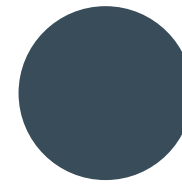
Memories
NP PB 1517 P



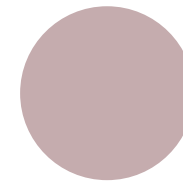
Electrify
NP AC 2097 A



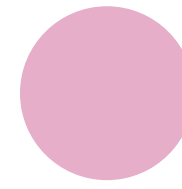
Ultra Blue
NP PB 1547 A



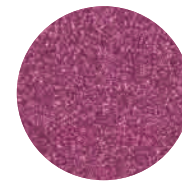
Ebony Blue
NP AC 2002 A



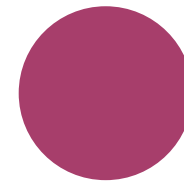
Mountain Haze
NP N 1894 P



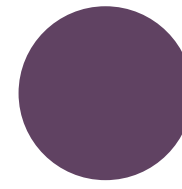
Pink Balloon
NP R 1326 P



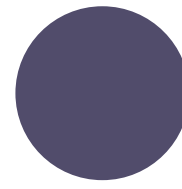
Metallic Peony Pink
MET 004



Latin Dance
NP R 1309 A



Grape Freeze
NP AC 2089 A



Blessed Purple
NP AC 2092 A

2018/19

CREDITS

DESIGN & ART DIRECTION
Colour Hive™ Limited

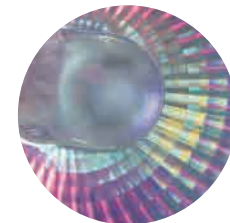
PRINTING
Asuka Colour Inc.



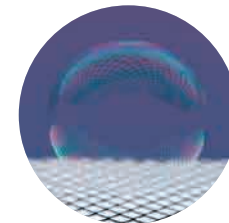
COVER
© Colour Hive



P5
© Colour Hive



P8
© Colour Hive



P9
© Colour Hive



P9
© Colour Hive



P10
© Colour Hive



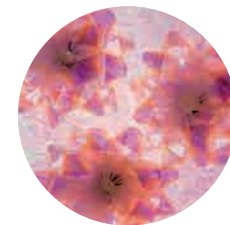
P11
© Colour Hive



P12
© Colour Hive



P15
© Colour Hive



P15
© Colour Hive



P17
© Colour Hive



P20
Martin Barraud /
OJO Images Ltd



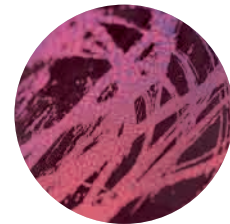
P22
Tom Merton / OJO Images Ltd /
Alamy Stock Photo



P23
© Colour Hive



P25
© Colour Hive



P25
© Colour Hive



P28
© Colour Hive



P30
© Colour Hive



P31
© Colour Hive



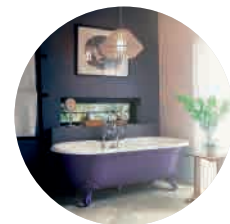
P33
© Colour Hive



P36
BuildPix / Avalon/
Construction Photography



P37
Will Pryce / Arcaid Images



P38
Gregg Vignal /
Alamy Stock Photo



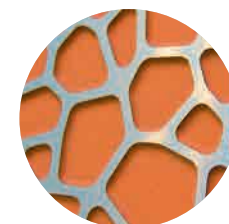
P39
Cote d'Azur /
Alamy Stock Photo



P40
Emre Zengin /
Alamy Stock Photo



P41
Cranmore Home
cranmorehome.com.au



P41
© Colour Hive



P46
© Colour Hive



P47
© Colour Hive



P49
© Colour Hive



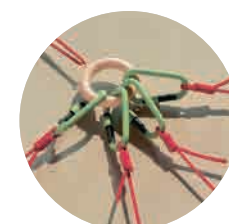
P55
Marcello Mariana / Arcaid
Images / Alamy Stock Photo



P60
© Colour Hive



P63
© Colour Hive



P63
© Colour Hive



P65
© Colour Hive



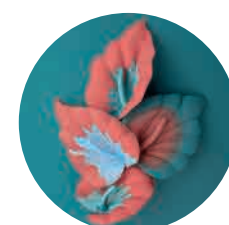
P69
Andreas von Einsiedel /
Alamy Stock Photo



P71
aaphotograph /
Alamy Stock Photo



P72
Planters by Emilie Stahl Carlsen
Polar shelves by Terhedebrügge
for WOOD / woud.dk



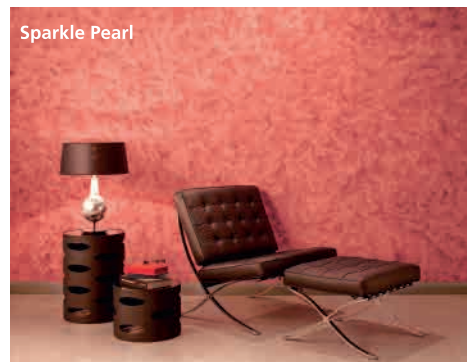
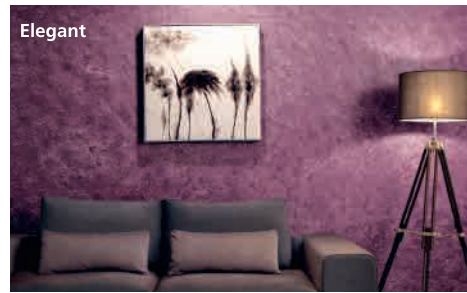
P75
© Colour Hive

From walls to ceilings, turn ordinary walls into extraordinary works of art with Momento® Special Effect Paint.

> TEXTURED SERIES

A unique paint that creates specially textured walls with an opaque wall finish, featuring five unique special effects.

*Elegant . Elegant Gold . Sparkle Pearl .
Sparkle Silver . Sparkle Gold*



✓ ENHANCER SERIES

A special line of semi-transparent paint that enhances any existing wall colour with a semi-transparent glaze-over, featuring five unique special effects.

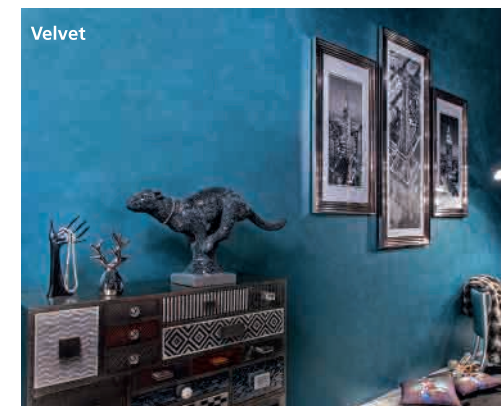
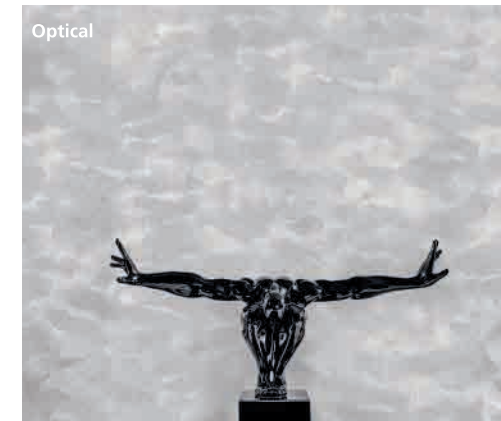
*Snow Frost . Pearl Frost . Gold Frost .
Cloud Pearl . Cloud Gold*



< DESIGNER SERIES

A sophisticated line of professional special effects paint that masterfully mimics the extraordinary beauty of real-life textures. Choose from six distinctive special effects.

*Optical . Rust Box . Velvet Gold . Velvet
Pearl . Velvet Metallic . Travertino*



< METALLIC SERIES

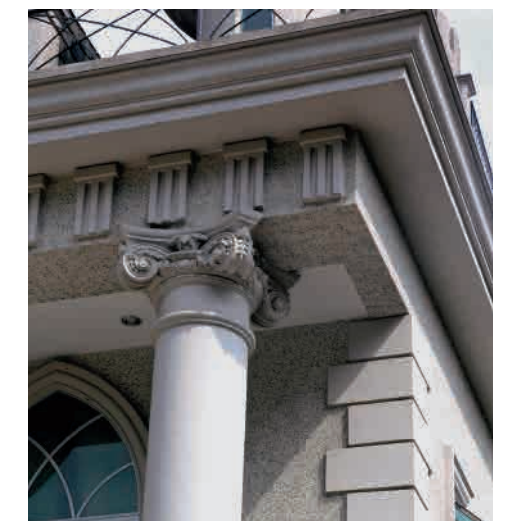
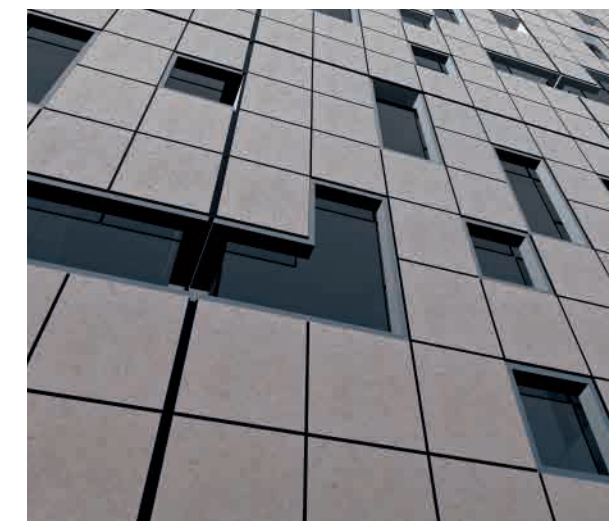
Introduce the sleek, luminous metal finish to your surfaces for a touch of modern luxury. The metallic shimmers add richness with lustrous shades for a timeless appeal.

*Metallic Paint . Micaceous Iron
Oxide (MIO)*

> STONE ART

Mimic the natural beauty of stone surfaces onto your walls with this unique collection. The stone-like textures capture the natural beauty of stone surfaces.

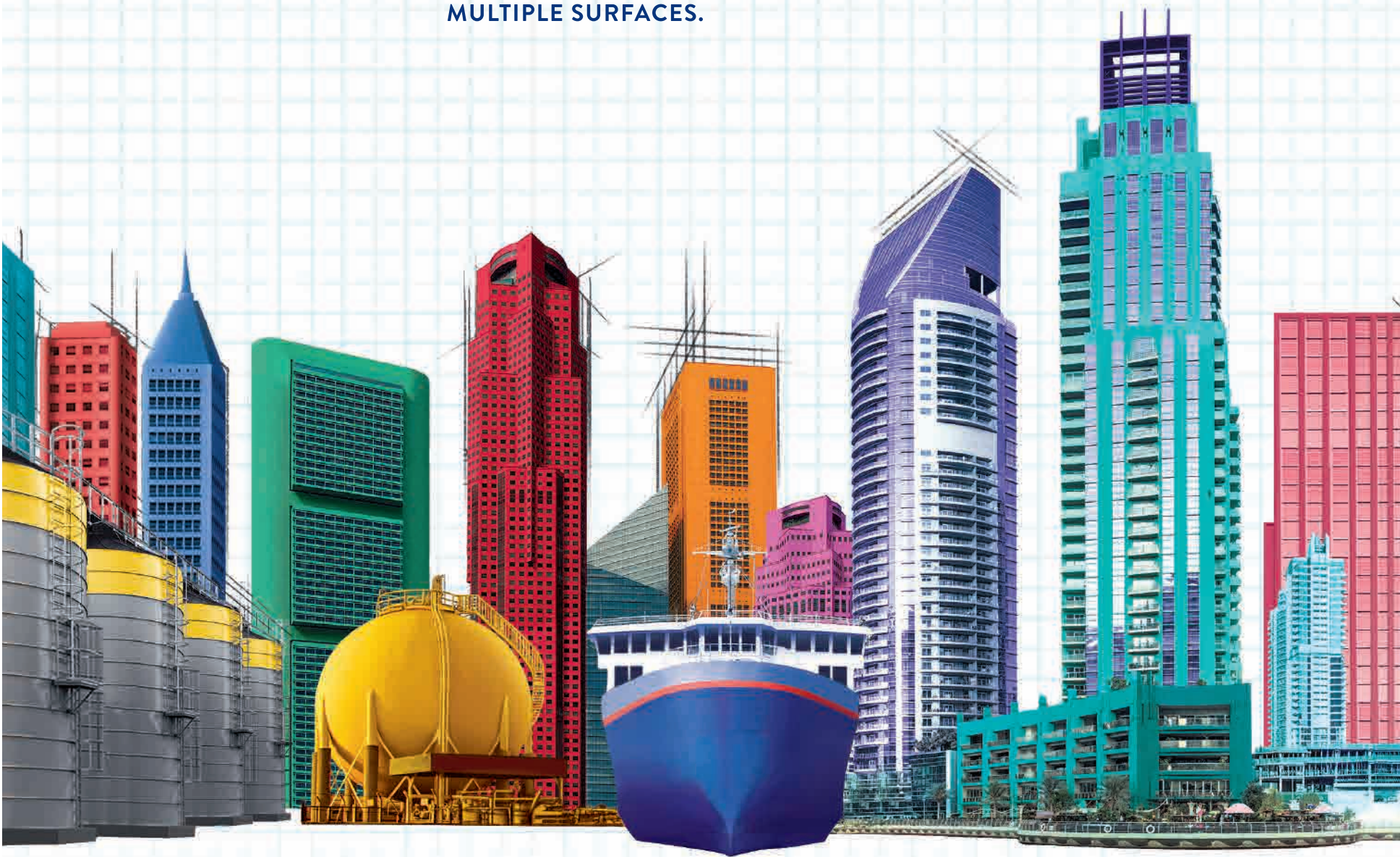
*A whole world of colourful
possibilities awaits you. Find more
ideas and inspiration at
www.nipponmomento.com*



RETHINK. RECREATE.

with **Asia's No. 1
Coatings Expert**

TOTAL COATINGS SOLUTION FOR MULTIPLE SEGMENTS AND
MULTIPLE SURFACES.



We at Nippon Paint do not only understand coating, but we also understand your needs as a business owner. We are committed and dedicated to assisting you in turning ordinary surfaces – from floors to roofs and everything in between – into extraordinary masterpieces.

So, it's time to rethink the way you see the world and recreate possibilities, only with Nippon Paint.



**THE
COATINGS
EXPERT®**

ARCHITECTURAL | PROTECTIVE | INDUSTRIAL | MARINE | AUTOMOTIVE



MALAYSIA

Nippon Paint (M) Sdn. Bhd.
 Lot I-17 Taman Perindustrian Subang
 Utama, Jalan SU 4, 40300 Shah Alam
 Selangor Darul Ehsan, Malaysia
 Tel: (+603) 5125 0888
 Fax: (+603) 5191 4849
 Toll Free: 1-800-88-2663
 Email: customercare@nipponpaint.com.my
 Website: www.nipponpaint.com.my

BANGLADESH

Nippon Paint (Bangladesh) Private Ltd.
 RS Plot No: 333-337 & 64-67,
 P.O. Mohadevpur, Thana - Shibbaloy,
 Dist. Manikgonj, Bangladesh
 Tel: (+88) 02 9335816
 Email: customercare@nipponpaint.com.bd
 Website: www.nipponpaint.com.bd

INDONESIA

PT Nipsea Paint and Chemicals
 Jl Ancol Barat I/A5/C No. 12
 Jakarta 14430, Indonesia
 Tel: (+62 21) 690 0546
 Fax: (+62 21) 692 7778
 Email: enquiry@nipponpaint-indonesia.com
 Website: www.nipponpaint-indonesia.com

PAKISTAN

Nippon Paint (Pakistan) (Private) Ltd.
 100-G, Phase 1, DHA,
 Lahore Cantt., Pakistan
 Tel: (+92) 42 3733 1481/84
 Fax: (+92) 42 3733 1485
 Email: info@nipponpakistan.com
 Website: www.nipponpaint.com.pk

PHILIPPINES

Nippon Paint (Coatings) Philippines, Inc.
 No. 4 Hologram Street,
 Light Industry and Science Park 1,
 Cabuyao, Laguna Philippines
 Tel: (+632) 845 1176/77
 Email: customercare@nipponpaint.ph
 Website: www.nipponpaint.ph

THAILAND

**Nippon Paint Decorative Coatings
 (Thailand) Co. Ltd.**
 101 Moo 3, Soi. Suksawad 76,
 Suksawad Road, Bangchak Prapadaeng
 Samutprakam, 10130 Thailand
 Tel: (+66) 2462 5299
 Fax: (+66) 2463 2863
 Email: npt@nipponpaint.co.th
 Website: www.nipponpaintdecor.com

CHINA

Nippon Paint (China) Co. Ltd.
 Yong Da International Building,
 12th Fl., 2227, Long Yang Road,
 Pudong New District, Shanghai,
 201204 China
 Tel: (+86) 21 5010 1687
 Fax: (+86) 21 5010 1102
 Website: www.nipponpaint.com.cn

HONG KONG

Nippon Paint (H.K.) Co., Ltd.
 Suite 3203-4, 32F, Tower 2, Nina Tower,
 8 Yeung Uk Road,
 Tsuen Wan,
 New Territories, Hong Kong
 Tel: (+852) 2699 9333
 Fax: (+852) 2602 8844
 Email: np@nipponpaint.com.hk
 Website: www.nipponpaint.com.hk

INDIA

Nippon Paint (India) Private Ltd.
 Plot No. K-8(I), Phase-II,
 Sipcot Industrial Park,
 Mambakkam Village,
 Sriperumbudur, Sunguvarchatiram,
 Kancheepuram - 602
 106, Tamil Nadu, India
 Tel: (+044) 3717 5555
 Fax: (+044) 3717 5556
 Website: www.nipponpaint.co.in

JAPAN

Nippon Paint Holdings Co. Ltd.
 2-1-2, Oyoda-kita, Kita-ku,
 Osaku 531-511, Japan
 Tel: (+81) 6 6458 1111
 Fax: (+81) 6 6455 9266
 Website: www.nipponpaint.co.jp

KOREA

Nipsea Chemical Co. Ltd.
 B7-39 Banwol Industrial Complex 407-7,
 Moknae-dong, Ansan-si,
 Gyunggi-Do, 425-100 Korea
 Tel: (+82) 31 493 9850
 Fax: (+82) 31 493 9856
 Email: skim@nipsea.co.kr
 Website: www.nipsea.co.kr

SINGAPORE

Nippon Paint (Singapore) Co. Pte. Ltd.
 1 First Lok Yang Road, Jurong
 Singapore 629728
 Tel: (+65) 6265 5355
 Fax: (+65) 6264 1603
 Email: customer@nipponpaint.com.sg
 Website: www.nipponpaint.com.sg

SRI LANKA

Nippon Paint Lanka (PVT) Ltd.
 No. 69A, Buthgamuwa Road
 Rajagiriya, Sri Lanka
 Tel: (+94) 114 600400
 Fax: (+94) 114 356909
 Email: colombo@nipponpaint.com.lk
 Website: www.nipponpaint.com.lk

TAIWAN

Nippon Paint (H.K.) Co. Ltd.
 10F, No. 43, Fuxing Rd, Xindian Dist,
 New Taipei City 23150, Taiwan (R.O.C.)
 Tel: (+886) 2 2219 1088
 Fax: (+886) 2 2219 8166
 Email: customer@nippon-paint.com.tw
 Website: www.nippon-paint.com.tw

VIETNAM

Nippon Paint (Vietnam) Co. Ltd.
 No 14, 3A Road, Bien Hoa Industrial Zone II,
 Dong Nai Province, Vietnam
 Tel: (+84) 61 383 6579 - 383 6586
 Fax: (+84) 61 383 6346 - 383 3649
 Email: info@nipponpaint.com.vn
 Website: www.nipponpaint.com.vn