



NIPPON VINILEX 5200 WALL SEALER

Internal Sealer

Recommended Uses

For use in interior, plastered walls, ceilings, brickwork, hard and softboard and asbestos.

Composition

- Pigments** : Titanium Dioxide and Mineral Extender
Binder : Styrene Acrylic Emulsion
Thinner : Water

Application Methods:

Thinning by volume

- 1) **Brush** : 50-60% with water
- 2) **Roller** : 20-25% with water
- 3) **Conventional Air Spray** : 25-30% with water

Product Description

Nippon Vinilex 5200 Wall Sealer is a styrene acrylic water based wall sealer. It is specially formulated for interior walls to protect the finishing coats against the effects of mild alkalinity and moisture from the substrate.



Clean Up: Clean up all the equipment with water immediately after use.

Surface Preparation

Remove all loose, defective paint or powdery residues. Repair cracks, uneven surfaces with Nippon ACS Putty or suitable fillers. Smoothen the putty / filler areas with sandpaper. Surfaces to be painted must be cleaned thoroughly and dry, it must be free from dirt, grease and other foreign matters. Allow all surfaces to dry completely prior to painting. Avoid painting when the moisture content and alkalinity of the walls are still high. (Recommended painting specification requires the moisture content of the walls to be below 16% measured by protimeter and alkalinity of the walls to be below pH9.

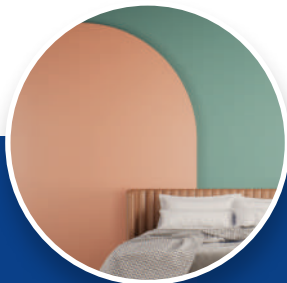
Previously Painted Surfaces

Remove all unstable paint film, loose chalk, dust and foreign matter. Prime it with NIPPON VINILEX 5200 WALL SEALER to cover surface defects, clean off and dry thoroughly.

Recommended Paint System

Type of Substrate:
FOR MASONRY

Sequence	Product Name	No. of Coats	Remarks
Sealer	NIPPON VINILEX 5200 WALL SEALER	1	
Finish	NIPPON SATIN GLO / NIPPON 3-IN-1 / NIPPON VINILEX FRESH ANTI-BACTERIAL EMULSION / NIPPON SUPER MATEX / NIPPON SUPER VINILEX 5000 EMUSLION / NIPPON ODOUR-LESS PREMIUM AII-IN-1	2	



Standard Packing: 5 litres, 20 litres

Safety, Health and Environmental Information:

Keep container tightly closed and keep out of reach of children or away from food and drinks. Ensure good ventilation during application and drying. When applying paint, it is advisable to wear eye protection. In case of contact with eye, rinse with plenty of water immediately and seek medical advice. Remove splashes from skin by using soap or water. Paint must always be stored in a cool dry place. When transporting paint, care must be taken. Always keep container in a secure upright position. Dispose off any paint waste in accordance with the appropriate Environmental Quality Regulations

Note:

* Theoretical Coverage is based on a mathematical formula

$$\left[\frac{\text{Volume Solid \%} \times 10}{\text{Dry Film Thickness}} \right] = \text{m}^2 / \text{lit} / \text{coat}$$

and does not consider LOSS FACTORS.

Variables like porosity of substrate, application method, dilution ratio, dry film thickness, opacity and so on will affect the loss factor and can vary from 30% - 50% or even more.

The above information is given to the best of our knowledge based on laboratory tests and practical experience.

However, since we cannot anticipate or control many conditions under which our products may be used, we can only guarantee the quality of the product itself.

We reserve the right to alter the given data without prior notice.